

## 4.1 Daily Foreign Exchange Rates

Pak Rupees per Currency Unit April, 2021

CURRENCY\DATE	1	2	5	6	7	8	9	12	13	15	16
Australian Dollar	115.2374	116.6668	116.6882	116.9828	116.9512	116.4747	116.4506	116.1327	115.9981	117.6514	117.9883
Bahraini Dinar	402.8456	404.5530	405.4815	404.7058	403.9923	403.8894	403.5358	403.5871	403.5971	403.4181	403.4095
Canadian Dollar	121.1108	122.0170	121.8476	122.1563	121.4256	121.2329	121.3870	121.5868	121.2939	121.7937	121.6840
Chinese Yuan	23.2321	23.3223	23.3580	23.3945	23.3931	23.3656	23.3190	23.3209	23.3154	23.3522	23.3848
Danish Krone	24.0418	24.2395	24.2510	24.3182	24.4134	24.3983	24.4408	24.4210	24.4052	24.5678	24.5476
Hong Kong Dollar	19.6326	19.7006	19.7388	19.7067	19.6656	19.6457	19.6442	19.6505	19.6507	19.6651	19.6585
Japanese Yen	1.3779	1.3830	1.3859	1.3889	1.3930	1.3932	1.3966	1.3943	1.3917	1.4011	1.4018
Kuwaiti Dinar	504.3987	506.9316	507.3713	506.9439	506.4890	506.1979	506.0449	505.9954	505.9797	505.9955	505.8994
Malaysian Ringgit	36.8023	36.9936	37.0346	37.0869	37.0602	36.9568	36.9291	36.9374	36.9409	36.9807	36.9822
New Zealand Dollar	106.1291	107.5996	107.6590	107.9665	107.8008	107.3230	107.5407	107.3250	107.0029	108.9711	109.2100
Norwegian Krone	17.8228	17.9660	17.9684	18.0219	18.0119	18.0505	18.0271	17.9599	17.9762	18.1742	18.1956
Omani Riyal	396.7584	398.5559	398.7714	398.1844	397.5273	397.4000	397.0310	397.1195	397.0104	396.8130	396.7039
Qatari Riyal	41.9485	42.1477	42.1656	42.1000	42.0420	42.0268	41.9711	41.9982	41.9894	41.9631	41.9472
Saudi Arabian Riyal	40.6713	40.7841	40.8771	40.8468	40.7732	40.7633	40.7190	40.7250	40.6974	40.6777	40.6784
Singaporean Dollar	113.2379	113.8198	113.8872	114.2341	114.1988	114.0111	113.8962	113.7488	113.6654	114.0901	114.2395
Swedish Krona	17.4477	17.5666	17.5743	17.5905	17.7564	17.7306	17.8565	17.8428	17.7764	18.0143	18.0521
Swiss Franc	161.2894	162.3766	162.5271	163.3038	164.2479	164.4834	165.0537	164.8955	165.0918	165.1422	165.3810
Thai Bhat	4.8799	4.9063	4.8985	4.8951	4.8884	4.8647	4.8593	4.8474	4.8457	4.8752	4.8886
Turkish Lira	18.4756	18.8611	18.7391	18.8833	18.7642	18.7352	18.7467	18.6789	18.7059	18.8914	18.9917
UAE Dirham	41.5267	41.6469	41.7426	41.7136	41.6371	41.6270	41.5831	41.5877	41.5534	41.5385	41.5412
UK Pound Sterling	210.0239	211.7060	211.9894	212.8723	211.2861	210.2919	209.5863	209.0353	209.5839	210.0581	209.8619
US Dollar	152.5452	152.9766	153.3331	153.2610	152.9748	152.8748	152.7472	152.7679	152.6503	152.6055	152.6141
EMU Euro	178.7210	180.0582	180.2354	180.7951	181.4526	181.3570	181.6763	181.5472	181.4218	182.5758	182.4259

## 4.1 Daily Foreign Exchange Rates

Pak Rupees per Currency Unit April, 2021

CURRENCY\DATE	19	20	21	22	23	26	27	28	29	30
Australian Dollar	118.0669	118.9678	117.8353	118.4328	118.6219	119.3872	119.9607	119.1882	119.3703	119.2988
Bahraini Dinar	403.5219	403.6348	404.3104	404.4783	405.9992	406.1434	407.0102	406.7279	404.8262	406.1957
Canadian Dollar	122.0413	122.1749	121.2301	122.3099	122.9588	123.3020	124.1466	124.0718	124.5115	124.9955
Chinese Yuan	23.4194	23.5220	23.5433	23.6009	23.6430	23.6984	23.7733	23.7524	23.7057	23.7375
Danish Krone	24.5521	24.7566	24.7277	24.7742	24.8347	25.0406	25.0238	25.0162	25.0104	25.0306
Hong Kong Dollar	19.6556	19.6715	19.7122	19.7372	19.8018	19.8270	19.8680	19.8593	19.7664	19.7906
Japanese Yen	1.4054	1.4109	1.4141	1.4163	1.4217	1.4258	1.4228	1.4140	1.4109	1.4099
Kuwaiti Dinar	506.2559	506.9791	507.7659	508.5924	509.8880	510.9493	511.9776	511.1682	509.1004	510.5047
Malaysian Ringgit	36.9740	37.1021	37.1380	37.2549	37.3674	37.4870	37.6289	37.5671	37.3715	37.4331
New Zealand Dollar	108.9784	110.0044	109.6057	110.0801	110.2617	110.8226	111.2763	110.9106	111.1838	111.2740
Norwegian Krone	18.2197	18.4825	18.2590	18.3758	18.4171	18.5847	18.5863	18.5981	18.7669	18.7353
Omani Riyal	396.9480	396.9793	397.8468	398.2442	399.4001	399.9843	400.9092	400.2468	398.3163	399.6909
Qatari Riyal	41.8945	41.9960	42.0757	42.1231	42.2634	41.8471	42.4052	42.3412	42.1327	42.2543
Saudi Arabian Riyal	40.6956	40.7093	40.7583	40.7869	40.9234	40.9728	41.0755	41.0596	40.8822	40.9092
Singaporean Dollar	114.4622	115.0447	114.9597	115.1912	115.4886	115.9011	116.1185	116.0063	115.6962	115.6453
Swedish Krona	18.0580	18.2098	18.1200	18.2133	18.2365	18.3635	18.3699	18.3709	18.4016	18.3355
Swiss Franc	165.7720	166.8954	166.7225	166.8697	167.2740	168.2628	168.1594	168.1046	168.4391	168.7818
Thai Bhat	4.8890	4.8997	4.8877	4.8956	4.9014	4.8938	4.9222	4.9171	4.9089	4.9303
Turkish Lira	18.8756	18.8662	18.8153	18.6194	18.4328	18.2130	18.5884	18.7277	18.7019	18.6456
UAE Dirham	41.5564	41.5721	41.6172	41.6486	41.7813	41.8326	41.9361	41.9233	41.7441	41.7785
UK Pound Sterling	211.3792	213.6694	212.8026	213.0386	212.6327	213.5323	213.8487	213.6717	213.7822	213.9123
US Dollar	152.6645	152.7210	152.8679	153.0041	153.4614	153.6603	154.0593	154.0221	153.3331	153.4693
EMU Euro	182.5482	184.0286	183.7098	183.9933	184.4317	185.9152	185.8552	185.8113	185.8601	185.8381

Source: Statistics & Data Warehouse Department, SBP

Note: The Exchange Rates are mid points of T.T. Buying and Selling.

## 4.2 Foreign Exchange Average Rates

Pak Rupees per US Dollar

PERIOD	2011-12	2012-13	2013-14	2014-15	2015-16	2016-17	2017-18	2018-19	2019-20	2020-21
Jul	86.0204	94.3779	100.4754	98.6543	101.7194	104.7388	105.4250	124.3534	158.8297	166.7625
Aug	86.6211	94.4660	102.9331	100.0897	102.3361	104.6221	105.3079	123.7896	158.0770	167.7064
Sep	87.4744	94.5877	105.2488	102.3425	104.2068	104.5396	105.3207	124.0816	156.1764	165.8541
Oct	86.9655	95.3487	106.1966	102.7537	104.4807	104.5985	105.3391	130.3831	155.9491	162.8000
Nov	86.9316	95.9926	107.5054	101.7874	105.3726	104.6935	105.3626	133.5041	155.3675	159.2122
Dec	89.3402	97.1870	106.9710	100.8234	104.6578	104.7248	108.6974	138.4713	154.9200	160.0795
Jan	90.1357	97.4720	105.3857	100.6834	104.8388	104.7301	110.4030	138.6951	154.6561	160.1536
Feb	90.6186	97.9687	105.0605	101.3651	104.6232	104.7204	110.4342	138.5307	154.2634	159.1313
Mar	90.7135	98.0605	99.9777	101.7598	104.6470	104.7417	112.0689	139.1663	158.4472	156.0298
Apr	90.6345	98.3119	97.4928	101.7004	104.6738	104.7474	115.4216	141.1646	164.4373	153.0769
May	91.2605	98.3739	98.5947	101.8043	104.6787	104.7381	115.4469	145.6922	160.0767	
Jun	94.1151	98.5796	98.4679	101.7725	104.5864	104.7702	118.9055	155.2491	165.1039	
Jul- Sep	86.7053	94.4772	102.8858	100.3622	102.7541	104.6335	105.3512	124.0749	157.6944	166.7743
Oct -Dec	87.7458	96.1761	106.8910	101.7882	104.8370	104.6723	106.4664	134.1195	155.4122	160.6973
Jan - Mar	90.4893	97.8337	103.4747	101.2694	104.7030	104.7307	110.9687	138.7974	155.7889	158.4382
Apr - Jun	92.0034	98.4218	98.1851	101.7591	104.6463	104.7519	116.5913	147.3686	163.2059	
<b>Annual</b>	<b>89.2359</b>	<b>96.7272</b>	<b>102.8591</b>	<b>101.2947</b>	<b>104.2351</b>	<b>104.6971</b>	<b>109.8444</b>	<b>136.0901</b>	<b>158.0253</b>	

Source: Statistics & Data Warehouse Department, SBP

## 4.3 NEER and REER Indices of Pakistani Rupees

(Base 2010 = 100)\*

PERIOD	NEER		REER	
	Index	% Change over last Year/Month	Index	% Change over last Year/Month
Jun-16	89.2890	0.74	117.3399	0.28
Jun-17	90.9981	1.91	121.0086	3.13
Jun-18	78.4221	-13.82	107.4833	-11.18
Jun-19	62.8885	-19.81	90.9787	-15.36
Jun-20	59.7676	-4.96	93.0417	2.27
2020				
Mar	62.4790	-1.9	97.1535	-0.07
Apr	61.1568	-2.12	94.4187	-2.81
May	62.5240	2.24	97.1981	2.94
Jun	59.7676	-4.41	93.0417	-4.28
Jul	58.6417	-1.88	93.1023	0.07
Aug	57.5413	-1.88	91.7888	-1.41
Sep	58.1729	1.1	94.1174	2.54
Oct	59.0687	1.54	97.1044	3.17
Nov	59.8030	1.24	99.3417	2.30
Dec	58.6234	-1.97	96.3266	-3.04
2021				
Jan	58.2541	-0.63	95.1638	-1.21
Feb	58.6869	0.74	97.2192	2.16
Mar <sup>R</sup>	60.5813	3.23	100.8229	3.71
Apr <sup>P</sup>	61.7514	1.93	103.2982	2.46

Source: Statistics & Data Warehouse Department, SBP

\* A REER index of 100 should not be misinterpreted as denoting the equilibrium value of the currency. 100 merely represents the value of the currency at a chosen point in time (in this case the average value of the currency in 2010). Therefore, movement of the REER away from 100 simply reflects changes in 2010 and is unrelated to its equilibrium value.

NOTES: -

- From July 2020, PBS has discontinued the dissemination of CPI on base 2007-08 using which the REER index was calculated, and changed the base to 2015-16. For the compilation of the REER index, therefore, the CPI - Base 2015-16 has been spliced and rebased to 2010 using the IMF's methodology.
- RPI and REER indices may be revised due to revisions in base period or splicing factor of CPIs data by PBS.
- Weights and number of trading partners have been revised since Jan-13. The REER and NEER have been recalculated since Jan-13 using these revised weights and number of trading partners. For detailed methodology and old series of REER and NEER, please visit the Revision Study at [http://www.sbp.org.pk/departments/stats/Notice/Revision-Study\(REER\).pdf](http://www.sbp.org.pk/departments/stats/Notice/Revision-Study(REER).pdf)
- Appreciation (depreciation) of REER is sometimes confused with the concept of currency overvaluation (undervaluation) while these are two separate concepts and not necessarily interpreted in the same direction. For an assessment of a country's exchange rate misalignment, a more sophisticated analysis is required taking into account factors such as demographics, external and fiscal sustainability, and some other macroeconomic fundamentals over the medium-term. The following explainer-video on REER [by SBP] goes into further detail. <https://youtu.be/RX00a7oevLg>

## 4.4 Average Exchange Rate of Major Currencies

Pak Rupees per Currency Unit

CURRENCY \ PERIOD	2018-19	2019-20	2020			2021			
			Mar	Apr	Dec	Jan	Feb	Mar	Apr
Australian Dollar	97.1720	105.9281	99.0009	103.3650	120.3473	123.6213	123.4492	120.2251	117.7311
Bahraini Dinar	359.8542	417.4041	418.1795	433.2937	423.0445	423.2828	420.4121	412.1106	404.5649
Canadian Dollar	102.7577	117.6982	114.0380	116.9620	124.8274	125.8266	125.3668	123.9364	122.3466
Chinese Yuan	19.9601	22.4714	22.5941	23.2434	24.4778	24.7613	24.6506	23.9858	23.4835
Danish Krone	20.8217	23.4120	23.5694	23.9925	26.1812	26.2160	25.9033	24.9889	24.6101
Hong Kong Dollar	17.3851	20.2849	20.4457	21.2315	20.6633	20.6708	20.5332	20.1031	19.7166
Japanese Yen	1.2256	1.4617	1.4770	1.5245	1.5416	1.5435	1.5109	1.4360	1.4028
Kuwaiti Dinar	448.8480	516.4404	513.4407	528.4211	525.2088	528.2062	525.6320	515.5959	507.6871
Malaysian Ringgit	33.0125	37.5510	36.9643	37.7774	39.4782	39.6708	39.3467	37.9694	37.1442
New Zealand Dollar	91.3270	100.4400	96.3934	98.8128	113.5169	115.1989	115.3130	111.3924	108.9964
Norwegian Krone	16.0678	16.9236	15.6638	15.8164	18.3966	18.8197	18.7515	18.2999	18.2476
Omani Riyal	353.9440	411.0123	412.4383	427.3038	416.1946	416.2684	413.3729	405.3381	398.1162
Qatari Riyal	37.4376	43.4318	43.6158	45.1667	43.9880	43.9971	43.7197	42.8087	42.0777
Saudi Arabian Riyal	36.2970	42.1047	42.2146	43.7265	42.6652	42.6868	42.4138	41.5917	40.8089
Singaporean Dollar	99.7143	114.1680	112.0711	115.4809	120.0790	120.7391	119.8793	116.1757	114.6449
Swedish Krona	14.8787	16.3999	16.2103	16.4251	19.1490	19.3251	19.1162	18.2938	17.9946
Swiss Franc	136.7559	161.7409	165.8054	169.3824	180.0155	180.5192	177.3870	167.8767	165.6702
Thai Baht	4.2335	5.0949	4.9545	5.0474	5.3291	5.3456	5.3132	5.0768	4.8902
Turkish lira	24.4875	25.9990	25.1342	24.1212	20.7379	21.6311	22.4554	20.3703	18.7123
UAE Dirham	37.0568	43.0181	43.1425	44.7606	43.5754	43.5966	43.3164	42.4730	41.6709
UK Pound Sterling	175.9211	199.0651	196.6111	203.9654	214.9170	218.2962	220.6439	216.1948	211.8364
US Dollar	136.0901	158.0253	158.4472	164.4373	160.0795	160.1536	159.1313	156.0298	153.0769
EMU Euro	155.0624	174.5851	175.6672	178.6711	194.6199	194.8533	192.5406	185.7310	182.8694

Source: Statistics & Data Warehouse Department, SBP

Note: - The Exchange Rates are Mid Points of T.T. Buying and Selling  
Archive Link: [http://www.sbp.org.pk/ecodata/IBF\\_Arch.xls](http://www.sbp.org.pk/ecodata/IBF_Arch.xls)

## 4.5 Appreciation / Depreciation\* of Selected Currencies Against US Dollar

(In Percent)

END OF PERIOD	Chinese Yuan	EMU Euro	Indian Rupee	Indonesian Rupiah	Iranian Rial	Japanese Yen	Malaysian Ringgit	Pakistani Rupee	UK Pound Sterling	Saudi Arabian Riyal	South Korean Won	Swiss Franc	Turkish Lira
2018	-4.98	-4.49	-8.65	-6.84	-14.06	+1.87	-2.26	-20.48	-6.04	+0.00	-4.45	-0.54	-28.40
2019	-1.92	-2.31	-1.91	+3.82	-0.55	+1.57	+1.03	-10.35	+3.36	+0.45	-3.41	+0.97	-11.01
2020	+6.92	+8.73	-3.34	-0.26	-0.02	+5.30	+1.48	-3.58	+2.27	-0.57	+4.91	+9.19	-22.17
2019 III	-3.68	-4.31	-2.50	-0.37	-1.16	-0.25	-1.07	+4.32	-3.05	+0.00	-3.70	-2.05	+2.27
IV	+2.04	+2.75	-0.92	+1.19	+0.00	-1.07	+1.79	+0.90	+6.67	+0.45	+3.48	+2.44	-5.00
2020 I	-1.49	-2.08	-5.36	-14.05	+0.00	+0.39	-4.39	-6.91	-5.80	-0.45	-5.05	+0.65	-9.53
II	+0.35	+2.21	-0.19	+13.29	-0.01	+0.91	+0.53	-1.05	-0.73	+0.00	+1.82	+1.57	-4.09
III	+3.81	+4.55	+2.34	-3.60	-0.01	+1.82	+2.92	+1.86	+4.58	-0.00	+2.34	+3.09	-11.80
IV	+4.19	+3.91	-0.02	+6.26	+0.00	+2.08	+2.59	+2.76	+4.58	-0.12	+6.02	+3.61	+1.70
2021 I	-0.39	-3.62	0.42	-3.30	+0.00	-6.39	-2.54	+5.28	+2.56	-0.76	-2.37	-5.64	-8.09
2020 Mar	-1.30	-0.19	-4.24	-12.88	+0.00	+0.64	-1.78	-7.33	-4.05	-0.26	-0.55	+0.08	-5.26
Apr	+0.54	-0.73	+0.36	+8.53	+0.00	+1.99	-0.54	+3.75	+1.21	+0.00	-0.21	-0.52	-5.91
May	-1.29	+2.39	-0.69	+2.70	+0.00	-0.52	-0.52	-0.65	-1.49	+0.48	-1.15	+0.92	+2.28
Jun	-0.19	+2.96	-0.55	+4.38	-0.01	-1.06	+1.08	-4.62	-1.91	+0.00	+2.04	+2.10	+1.93
Jul	+1.18	+5.80	+1.01	-1.72	+0.45	+3.03	+1.31	+0.35	+7.07	+1.24	+0.78	+4.64	-1.24
Aug	+1.89	+0.78	+1.60	+0.47	-0.44	-0.78	+1.23	+1.38	+1.30	-1.22	+0.53	+0.40	-5.61
Sep	+0.70	-1.94	-0.27	-2.38	-0.01	-0.40	+0.35	+0.12	-3.58	-0.00	+1.01	-1.87	-5.38
Oct	+1.65	-0.09	-0.26	+1.94	+0.00	+1.16	+0.04	+2.08	+1.18	-0.02	+3.52	+0.61	-7.06
Nov	+1.72	+2.41	+0.36	+3.49	-0.00	+0.68	+2.16	+1.47	+2.86	+0.02	+2.63	+1.47	+7.53
Dec	+0.76	+1.55	-0.12	+0.73	+0.00	+0.23	+0.39	-0.79	+0.48	-0.12	-0.20	+1.50	+1.76
2021 Jan	+1.14	-0.25	+1.18	+0.12	-0.00	-0.81	-0.02	+0.33	+2.22	+0.00	-0.72	+0.10	+4.61
Feb	-0.08	-0.12	-0.12	-1.48	+0.00	-1.65	+0.11	+1.28	+1.51	-0.39	+0.56	-1.89	-1.76
Mar	-1.43	-3.27	-0.63	-1.96	0.00	-4.04	-2.63	+3.60	-1.16	-0.37	-2.21	-3.92	-10.56
Apr	+1.31	+3.05	-0.70	+0.61	-0.12	+1.61	+1.33	-0.82	+1.08	+0.88	+2.36	+3.69	+0.49

\*End of Current month/ period over end of previous month/ period

Note:

1. ( + ) Indicates appreciation , ( - ) indicates depreciation

2. Exchange Rates used in Appreciation/Depreciation are taken from International Monetary Fund (IMF) website at link:

[http://www.imf.org/external/np/fin/data/param rms\\_mth.aspx](http://www.imf.org/external/np/fin/data/param rms_mth.aspx)

## 4.6 Appreciation / Depreciation\* of Selected Currencies Against SDR

(In Percent)

END OF PERIOD	Chinese Yuan	EMU Euro	Indian Rupee	Indonesian Rupiah	Iranian Rial	Japanese Yen	Malaysian Ringgit	Pakistani Rupee	Saudi Arabian Riyal	UK Pound Sterling	South Korean Won	Swiss Franc	Turkish Lira	US Dollar
2018	-2.70	-2.20	-6.46	-4.60	-12.00	+4.31	+0.08	-18.57	-3.79	+2.40	-2.16	+1.84	-26.68	+2.40
2019	-1.35	-3.67	-4.65	-3.36	-7.55	+2.89	-1.96	-16.59	-6.07	+4.77	+0.12	-0.37	-25.64	+4.77
2020	+2.65	+4.39	-7.20	-4.24	-4.00	+1.10	-2.56	-7.43	-1.80	-4.54	+0.72	+4.84	-25.27	-3.99
2019 III	-1.78	-2.43	-0.58	+1.60	+0.79	+1.72	+0.88	+6.38	-1.13	+1.97	-1.80	-0.12	+4.29	+1.97
IV	+0.59	+1.30	-2.32	-0.24	-1.41	-2.47	+0.35	-0.52	+5.16	-0.96	+2.02	+0.99	-6.34	-1.41
2020 I	-0.19	-0.79	-4.11	-12.92	+1.32	+1.71	-3.13	-5.68	-4.56	+0.86	-3.79	+1.98	-8.34	+1.32
II	-0.45	+1.40	-0.98	+12.39	-0.80	+0.11	-0.27	-1.83	-1.51	-0.79	+1.02	+0.76	-4.85	-0.79
III	+1.46	+2.19	+0.03	-5.78	-2.27	-0.48	+0.59	-0.45	+2.21	-2.26	+0.02	+0.76	-13.79	-2.26
IV	+1.82	+1.55	-2.29	+3.85	-2.27	-0.23	+0.26	+0.43	+2.20	-2.39	+3.62	+1.26	-0.61	-2.27
2021 I	+1.23	-2.06	+2.05	-1.73	+1.63	-4.86	-0.95	+6.99	+4.23	+0.86	-0.78	-4.11	-6.59	+1.63
2020 Mar	-0.68	+0.43	-3.65	-12.34	+0.62	+1.27	-1.17	-6.75	-3.45	+0.36	+0.07	+0.70	-4.67	+0.62
Apr	+0.43	-0.85	+0.24	+8.40	-0.12	+1.87	-0.66	+3.63	+1.09	-0.12	-0.33	-0.64	-6.02	-0.12
May	-1.69	+1.97	-1.10	+2.28	-0.41	-0.93	-0.93	-1.06	-1.89	+0.07	-1.55	+0.50	+1.86	-0.41
Jun	+0.84	+0.29	-0.12	+1.36	-0.28	-0.80	+1.33	-4.25	-0.70	-0.74	+2.95	+0.90	-0.61	-0.27
Jul	-1.49	+3.01	-1.66	-4.32	-2.21	+0.31	-1.36	-2.30	+4.24	-1.44	-1.88	+1.87	-3.86	-2.64
Aug	+1.47	+0.36	+1.18	+0.06	-0.85	-1.19	+0.82	+0.96	+0.88	-1.63	+0.12	-0.02	-6.00	-0.41
Sep	+1.51	-1.15	+0.53	-1.59	+0.80	+0.41	+1.16	+0.92	-2.80	+0.81	+1.82	-1.08	-4.62	+0.81
Oct	+1.35	-0.37	-0.55	+1.64	-0.29	+0.87	-0.25	+1.79	+0.89	-0.31	+3.22	+0.32	-7.33	-0.29
Nov	+0.41	+1.09	-0.94	+2.15	-1.29	-0.62	+0.84	+0.16	+1.53	-1.27	+1.30	+0.16	+6.14	-1.29
Dec	+0.05	+0.83	-0.82	+0.02	-0.71	-0.48	-0.32	-1.49	-0.23	-0.83	-0.90	+0.78	+1.04	-0.71
2021 Jan	+1.10	-0.28	+1.14	+0.08	-0.04	-0.85	-0.05	+0.29	+2.18	-0.04	-0.75	+0.06	+4.57	-0.04
Feb	+0.03	-0.02	-0.02	-1.37	+0.11	-1.54	+0.22	+1.39	+1.62	-0.28	+0.67	-1.78	-1.66	+0.11
Mar	+0.10	-1.76	+0.92	-0.44	+1.56	-2.54	-1.12	+5.22	+0.38	+1.18	-0.69	-2.43	-9.17	+1.56
Apr	-0.01	+1.70	-2.00	-0.70	-1.43	+0.28	+0.00	-2.12	-0.25	-0.43	+1.02	+2.34	-0.83	-1.31

\*End of Current month/ period over end of previous month/ period

Note:

- (+) Indicates appreciation, (-) indicates depreciation
- Exchange Rates used in Appreciation/Depreciation are taken from International Monetary Fund (IMF) website at link: [http://www.imf.org/external/np/fin/data/param\\_rms\\_mth.aspx](http://www.imf.org/external/np/fin/data/param_rms_mth.aspx)

## 4.7 Appreciation / Depreciation\* of Pak Rupee Against Selected Currencies

(In Percent)

END OF PERIOD	2018	2019	2020	Quarterly				2020		2021			
				2020			2021	Mar	Apr	Jan	Feb	Mar	Apr
				II	III	IV	I						
Australian Dollar	-12.03	-8.60	-11.71	-10.97	-1.65	-3.28	+4.59	-2.09	-2.43	-0.89	-1.10	+6.70	-3.04
Brazilian Real	-6.85	-6.74	+23.77	+4.23	+4.92	-5.74	+15.93	+7.10	+8.30	+6.18	+2.29	+6.73	-5.93
Canadian Dollar	-13.87	-13.96	-5.04	-4.95	-0.30	-0.96	+2.98	-2.10	+1.72	-0.26	+0.53	+2.71	-3.11
Chinese Yuan	-16.31	-8.60	-9.82	-1.39	-1.88	-1.37	+5.69	-6.11	+3.19	-0.80	+1.36	+5.11	-2.10
EMU Euro	-16.74	-8.23	-11.33	-3.19	-2.58	-1.11	+9.24	-7.15	+4.51	+0.58	+1.41	+7.10	-3.75
Hong Kong Dollar	-20.31	-10.85	-4.00	-1.08	+1.85	+2.80	+5.56	-7.82	+3.73	+0.33	+1.31	+3.85	-0.81
Indian Rupee	-12.95	-8.60	-0.25	-0.86	-0.47	+2.78	+4.84	-3.22	+3.37	-0.84	+1.41	+4.26	-0.12
Indonesian Rupiah	-14.64	-13.65	-3.33	-12.65	+5.66	-3.29	+8.87	6.37	-4.41	+0.21	+2.80	+5.68	-1.42
Iranian Rial	-7.47	-9.85	-3.57	-1.04	+1.87	+2.76	+5.28	-7.33	+3.75	+0.33	+1.28	+3.60	-0.70
Japanese Yen	-21.94	-11.73	-8.43	-1.94	+0.03	+0.66	+12.46	-7.92	+1.72	+1.15	+2.98	+7.96	-2.39
Korean Won	-16.77	-7.18	-8.09	-2.82	-0.47	-3.08	+7.84	-6.82	+3.97	+1.05	+0.72	+5.95	-3.10
Malaysian Ringgit	-18.64	-11.27	-4.99	-1.57	-1.03	+0.16	+8.02	-5.65	+4.31	+0.34	+1.17	+6.41	-2.12
Saudi Arabian Riyal	-20.48	-10.76	-3.03	-1.05	+1.86	+2.89	+6.08	-7.08	+3.75	+0.33	+1.68	+3.99	-1.69
Singaporean Dollar	-18.58	-11.58	-4.63	-3.24	+0.10	+0.21	+6.22	-5.54	+2.73	+0.05	+1.01	+5.11	-2.36
Swedish Krona	-13.34	-6.15	-14.47	-6.11	-3.57	-3.10	+8.42	-6.34	+5.82	+0.50	+0.96	+6.86	-2.65
Swiss Franc	-20.05	-10.37	-12.89	-1.89	-2.10	-0.53	+11.04	-8.96	+4.27	+0.49	+2.38	+7.93	-3.20
Taiwani Dollar	-18.25	-11.84	-9.59	-3.83	+0.24	-0.03	+6.41	-7.23	+1.78	-0.31	+0.91	+5.78	-2.72
Thai Baht	-21.07	-16.70	-3.30	-6.54	+4.43	-1.96	+9.28	-4.21	+2.68	-0.41	+1.99	+7.59	-1.32
UK Pound Sterling	-15.37	-13.26	-5.73	-0.32	-2.60	-1.74	+2.65	-3.42	+2.51	-1.85	-0.22	+4.82	-1.88
U.S Dollar	-20.48	-10.35	-3.58	-1.05	+1.86	+2.76	+5.28	-7.33	+3.75	+0.33	+1.28	+3.60	-0.82
UAE Dirham	-20.48	-10.35	-3.58	-1.05	+1.86	+2.76	+5.28	-7.08	+3.75	+0.18	+1.95	+3.08	-0.82

\*End of Current month/ period over end of previous month/ period

Note:

- (+) Indicates appreciation, (-) indicates depreciation
- Exchange Rates used in Appreciation/Depreciation are taken from International Monetary Fund (IMF) website at link: [http://www.imf.org/external/np/fin/data/param\\_rms\\_mth.aspx](http://www.imf.org/external/np/fin/data/param_rms_mth.aspx)

## 4.8 Workers' Remittances

(Million US Dollars)

COUNTRIES	FY17	FY18	FY19	FY20	Apr		Jul-Apr	
					2020	2021 <sup>P</sup>	FY20	FY21 <sup>P</sup>
<b>I. Cash</b>	<b>19,351.4</b>	<b>19,913.6</b>	<b>21,739.4</b>	<b>23,132.3</b>	<b>1,785.1</b>	<b>2,778.2</b>	<b>18,793.8</b>	<b>24,246.1</b>
1.USA	2,452.9	2,838.0	3,309.1	1,742.8	153.0	314.9	1,399.5	2,216.7
2.UK	2,341.7	2,892.4	3,412.3	2,569.0	187.4	431.1	1,980.6	3,331.6
3.Saudi Arabia	5,469.8	4,858.8	5,003.0	6,613.5	548.4	664.5	5,324.1	6,396.3
4.UAE	4,328.2	4,359.0	4,617.3	5,611.8	463.2	549.3	4,682.3	5,075.6
Dubai	2,845.3	3,173.7	3,075.5	4,768.2	397.5	432.1	3,965.7	4,238.6
Abu Dhabi	1,426.8	1,132.7	1,488.0	810.4	60.1	107.4	693.1	754.7
Sharjah	50.5	47.6	37.2	25.1	4.3	8.4	17.7	60.7
Others	5.5	5.0	16.7	8.1	1.2	1.5	5.8	21.6
5.Other GCC Countries	2,325.5	2,158.3	2,119.1	2,910.2	183.8	297.3	2,448.1	2,755.8
Bahrain	396.4	355.7	340.2	417.1	31.9	39.8	348.2	390.5
Kuwait	763.8	774.2	725.8	738.6	47.8	78.5	659.0	715.2
Qatar	404.4	371.1	385.9	760.2	44.6	84.6	630.3	751.9
Oman	760.9	657.3	667.2	994.3	59.5	94.4	810.6	898.1
6.EU Countries	482.7	658.1	609.0	1,778.5	116.7	251.3	1,420.2	2,192.9
Germany	94.1	127.8	123.5	392.2	26.3	40.0	310.8	350.1
France	47.4	54.1	61.4	240.4	13.2	38.3	193.2	341.6
Netherlands	5.5	7.0	6.8	65.7	10.2	4.8	59.0	38.5
Spain	55.8	129.5	150.9	329.7	16.6	36.5	267.8	325.2
Italy	60.7	98.1	111.2	361.3	20.1	51.7	295.5	480.6
Greece	23.2	32.1	49.6	145.1	11.0	26.6	110.5	215.3
Sweden	18.9	19.4	17.0	44.9	2.9	6.4	36.4	50.8
Denmark	12.8	13.7	15.8	45.3	3.6	7.5	35.3	59.4
Ireland	155.3	159.4	51.2	75.4	5.2	13.9	57.0	128.7
Belgium	9.0	17.0	21.7	78.6	7.7	25.8	54.8	202.6
7.Malaysia	1,067.4	1,148.1	1,551.7	226.5	8.0	19.8	195.7	174.8
8.Norway	41.3	47.8	43.5	69.7	6.6	12.0	55.4	90.7
9.Switzerland	26.4	27.4	31.1	31.1	2.4	5.0	24.2	36.4
10.Australia	204.7	230.6	246.0	339.8	24.3	56.5	254.1	496.7
11.Canada	187.4	211.1	213.0	313.4	28.1	69.8	236.7	464.2
12.Japan	14.3	22.8	23.0	66.4	4.9	7.1	52.7	72.7
13.Other Countries	409.1	461.3	561.3	859.6	58.4	99.7	720.3	941.6
<b>II. Encashment and Profit in Pak. Rs. of FEBCs &amp; FCBCs</b>	<b>..</b>	<b>...</b>	<b>..</b>	<b>-</b>	<b>-</b>	<b>-</b>	<b>-</b>	<b>-</b>
<b>Total (I+II)</b>	<b>19,351.4</b>	<b>19,913.6</b>	<b>21,739.4</b>	<b>23,132.3</b>	<b>1,785.1</b>	<b>2,778.2</b>	<b>18,793.8</b>	<b>24,246.1</b>

Source: Statistics & Data Warehouse Department, SBP

Note: Data is based on original country of remitter from July 2019. The details of country wise revisions are available at:

<http://www.sbp.org.pk/departments/stats/AdvanceNotice.pdf>

Archive Link: [http://www.sbp.org.pk/ecodata/Homeremit\\_Arch.xls](http://www.sbp.org.pk/ecodata/Homeremit_Arch.xls)



## 4.9 Pakistan's Balance of Payments

(Million US Dollars)

ITEMS	FY20			Jul-Apr					
	Credit	Debit	Net	FY20 <sup>R</sup>			FY21 <sup>P</sup>		
				Credit	Debit	Net	Credit	Debit	Net
<b>1. Current Account (A+B+C)</b>	<b>54,254</b>	<b>58,703</b>	<b>(4,449)</b>	<b>45,709</b>	<b>50,366</b>	<b>(4,657)</b>	<b>54,137</b>	<b>53,364</b>	<b>773</b>
<b>A. Goods and services (a+b)</b>	<b>27,973</b>	<b>52,398</b>	<b>(24,425)</b>	<b>24,403</b>	<b>45,002</b>	<b>(20,599)</b>	<b>25,889</b>	<b>48,625</b>	<b>(22,736)</b>
<b>a. Goods</b>	<b>22,536</b>	<b>43,645</b>	<b>(21,109)</b>	<b>19,704</b>	<b>37,280</b>	<b>(17,576)</b>	<b>20,993</b>	<b>42,309</b>	<b>(21,316)</b>
1. General merchandise	22,496	43,645	(21,149)	19,664	37,280	(17,616)	20,981	42,309	(21,328)
2. Net exports of goods under merchanting (only export)	40	...	40	40	...	40	12	...	12
3. Nonmonetary gold	-	-	-	-	-	-	-	-	-
<b>b. Services</b>	<b>5,437</b>	<b>8,753</b>	<b>(3,316)</b>	<b>4,699</b>	<b>7,722</b>	<b>(3,023)</b>	<b>4,896</b>	<b>6,316</b>	<b>(1,420)</b>
1. Manufacturing services on physical inputs owned by others	-	-	-	-	-	-	-	-	-
2. Maintenance and repair services n.i.e.	7	65	(58)	7	61	(54)	3	40	(37)
3. Transport	741	3,036	(2,295)	667	2,714	(2,047)	504	2,300	(1,796)
4. Travel	490	1,229	(739)	443	1,161	(718)	426	668	(242)
5. Construction	166	77	89	146	71	75	89	-	89
6. Insurance and pension services	42	276	(234)	34	238	(204)	37	204	(167)
7. Financial services	135	468	(333)	127	363	(236)	84	140	(56)
8. Charges for the use of intellectual property n.i.e.	4	181	(177)	3	149	(146)	11	216	(205)
9. Telecommunications, computer, and information services	1,440	385	1,055	1,171	317	854	1,708	446	1,262
10. Other business services	1,328	2,560	(1,232)	1,143	2,213	(1,070)	1,157	2,060	(903)
11. Personal, cultural, and recreational services	8	1	7	7	1	6	9	-	9
12. Government goods and services n.i.e.	1,076	475	601	951	434	517	868	242	626
<b>B. Primary Income</b>	<b>479</b>	<b>5,938</b>	<b>(5,459)</b>	<b>411</b>	<b>5,052</b>	<b>(4,641)</b>	<b>463</b>	<b>4,488</b>	<b>(4,025)</b>
1. Compensation of employees	131	24	107	111	22	89	145	34	111
2. Investment income	348	5,914	(5,566)	300	5,030	(4,730)	318	4,454	(4,136)
2.1 Direct investment	54	2,664	(2,610)	62	2,295	(2,233)	7	2,267	(2,260)
2.1.1 Investment income on equity and investment fund shares	54	2,658	(2,604)	62	2,293	(2,231)	7	2,239	(2,232)
2.1.2 Interest	-	6	(6)	-	2	(2)	-	28	(28)
2.2 Portfolio investment	97	593	(496)	77	491	(414)	90	458	(368)
2.2.1 Investment income on equity and investment fund shares	3	141	(138)	2	129	(127)	6	97	(91)
2.2.2 Interest	94	452	(358)	75	362	(287)	84	361	(277)
2.3 Other investment	99	2,657	(2,558)	65	2,244	(2,179)	192	1,729	(1,537)
2.3.1 Withdrawals from income of quasi corporations	-	-	-	-	-	-	-	-	-
2.3.2 Interest	99	2,657	(2,558)	65	2,244	(2,179)	192	1,729	(1,537)
2.3.3 Investment income attributable to policyholders in insurance, pension fund	-	-	-	-	-	-	-	-	-
2.4 Reserve assets	98	...	98	96	...	96	29	...	29
3. Other primary income	-	-	-	-	-	-	-	-	-
<b>C. Secondary Income</b>	<b>25,802</b>	<b>367</b>	<b>25,435</b>	<b>20,895</b>	<b>312</b>	<b>20,583</b>	<b>27,785</b>	<b>251</b>	<b>27,534</b>
1. General government	468	19	449	424	14	410	252	16	236
2. Financial corporations, nonfinancial corporations, households, and NPISHs	25,334	348	24,986	20,471	298	20,173	27,533	235	27,298
<b>2. Capital account</b>	<b>288</b>	<b>3</b>	<b>285</b>	<b>247</b>	<b>1</b>	<b>246</b>	<b>204</b>	<b>-</b>	<b>204</b>
1. Gross acquisitions (DR)/disposals (CR) of nonproduced nonfinancial assets	1	3	(2)	1	1	-	7	-	7
2. Capital transfers	287	-	287	246	-	246	197	-	197
2.1 General government	273	-	273	234	-	234	183	-	183
2.1.1 Debt forgiveness	-	-	-	-	-	-	-	-	-
2.1.2 Other Capital transfers	273	-	273	234	-	234	183	-	183
2.2 Financial corporations, nonfinancial corporations, households, and NPISHs	14	-	14	12	-	12	14	-	14
2.2.1 Debt forgiveness	-	-	-	-	-	-	-	-	-
2.2.2 Other Capital transfers	14	-	14	12	-	12	14	-	14
<b>Net lending (+) / net borrowing (-) (balance from current and capital accounts) (1+2)</b>	<b>54,542</b>	<b>58,706</b>	<b>(4,164)</b>	<b>45,956</b>	<b>50,367</b>	<b>(4,411)</b>	<b>54,341</b>	<b>53,364</b>	<b>977</b>

## 4.9 Pakistan's Balance of Payments

(Million US Dollars)

ITEMS	FY20			Jul-Apr					
	Net acquisition of financial assets	Net incurrence of liabilities	Net	FY20 <sup>R</sup>			FY21 <sup>P</sup>		
				Net acquisition of financial assets	Net incurrence of liabilities	Net	Net acquisition of financial assets	Net incurrence of liabilities	Net
<b>3. Financial account</b>	<b>4,250</b>	<b>8,264</b>	<b>(4,014)</b>	<b>4,674</b>	<b>8,143</b>	<b>(3,469)</b>	<b>3,749</b>	<b>3,657</b>	<b>92</b>
<b>1. Direct investment</b>	<b>(54)</b>	<b>2,598</b>	<b>(2,652)</b>	<b>(58)</b>	<b>2,302</b>	<b>(2,360)</b>	<b>55</b>	<b>1,554</b>	<b>(1,499)</b>
1.1 Equity and investment fund shares	(54)	2,235	(2,289)	(58)	1,968	(2,026)	57	1,587	(1,530)
1.2 Debt instruments	-	363	(363)	-	334	(334)	(2)	(33)	31
<b>2. Portfolio investment</b>	<b>(115)</b>	<b>(524)</b>	<b>409</b>	<b>(115)</b>	<b>(418)</b>	<b>303</b>	<b>24</b>	<b>2,185</b>	<b>(2,161)</b>
2.1 Equity and investment fund shares	-	(282)	282	-	(183)	183	(21)	(279)	258
2.2 Debt instruments	(115)	(242)	127	(115)	(235)	120	45	2,464	(2,419)
<b>3. Financial derivatives (other than reserves) and employees stock options</b>	<b>(8)</b>	<b>-</b>	<b>(8)</b>	<b>(8)</b>	<b>-</b>	<b>(8)</b>	<b>2</b>	<b>-</b>	<b>2</b>
<b>4. Other investment</b>	<b>(127)</b>	<b>6,190</b>	<b>(6,317)</b>	<b>3</b>	<b>6,259</b>	<b>(6,256)</b>	<b>883</b>	<b>(82)</b>	<b>965</b>
4.1 Other equity	-	-	-	-	-	-	-	-	-
4.2 Currency and deposits	(129)	(234)	105	(268)	(284)	16	234	(2,496)	2,730
Central bank	-	(498)	498	-	(497)	497	-	(3,000)	3,000
Deposit-taking corporations, except the central bank	140	227	(87)	(310)	181	(491)	69	(4)	73
General government	3	37	(34)	3	32	(29)	(18)	508	(526)
Other sectors	(272)	-	(272)	39	-	39	183	-	183
4.3 Loans	-	6,787	(6,787)	-	6,710	(6,710)	-	448	(448)
Central bank	-	(745)	745	-	(538)	538	-	(779)	779
Deposit-taking corporations, except the central bank	-	-	-	-	-	-	-	-	-
General government	-	5,882	(5,882)	-	5,468	(5,468)	-	1,460	(1,460)
Other sectors	-	1,650	(1,650)	-	1,780	(1,780)	-	(233)	233
4.4 Insurance, pension, and std. guarantee schemes	-	-	-	-	-	-	-	-	-
Central bank	-	-	-	-	-	-	-	-	-
Deposit-taking corporations, except the central bank	-	-	-	-	-	-	-	-	-
General government	-	-	-	-	-	-	-	-	-
Other sectors	-	-	-	-	-	-	-	-	-
4.5 Trade credit and advances	(43)	1	(44)	262	1	261	629	-	629
Central bank	-	-	-	-	-	-	-	-	-
Deposit-taking corporations, except the central bank	-	-	-	-	-	-	-	-	-
General government	-	-	-	-	-	-	-	-	-
Other sectors	(43)	1	(44)	262	1	261	629	-	629
4.6 Other accounts receivable/ Payable	45	(364)	409	9	(168)	177	20	1,966	(1,946)
Central bank	-	-	-	-	-	-	-	1,534	(1,534)
Deposit-taking corporations, except the central bank	-	(351)	351	-	(135)	135	-	(489)	489
General government	45	-	45	9	-	9	20	1,000	(980)
Other sectors	-	(13)	13	-	(33)	33	-	(79)	79
4.7 Special drawing rights	...	-	-	...	-	-	...	-	-
<b>5. Reserve assets</b>	<b>4,554</b>	<b>...</b>	<b>4,554</b>	<b>4,852</b>	<b>...</b>	<b>4,852</b>	<b>2,785</b>	<b>...</b>	<b>2,785</b>
5.1 Monetary gold	-	...	-	-	...	-	-	...	-
5.2 Special drawing rights	(160)	...	(160)	(130)	...	(130)	237	...	237
5.3 Reserve position in the IMF	-	...	-	-	...	-	-	...	-
5.4 Other reserve assets	4,714	...	4,714	4,982	...	4,982	2,548	...	2,548
	<b>Credit</b>	<b>Debit</b>	<b>Net</b>	<b>Credit</b>	<b>Debit</b>	<b>Net</b>	<b>Credit</b>	<b>Debit</b>	<b>Net</b>
<b>4. Errors and Omissions</b>	<b>150</b>	<b>-</b>	<b>150</b>	<b>942</b>	<b>-</b>	<b>942</b>	<b>-</b>	<b>885</b>	<b>(885)</b>
<b>5. Exceptional Financing</b>	<b>-</b>	<b>-</b>	<b>-</b>	<b>-</b>	<b>-</b>	<b>-</b>	<b>-</b>	<b>-</b>	<b>-</b>

Source: Statistics & Data Warehouse Department, SBP

-- Not Applicable

Archive Link: [http://www.sbp.org.pk/ecodata/BOP\\_arch/index.asp](http://www.sbp.org.pk/ecodata/BOP_arch/index.asp)

## 4.10 International Investment Position of Pakistan

End period  
(Million US \$)

	2019		2020			
	Sep	Dec	Mar	Jun	Sep <sup>R</sup>	Dec <sup>P</sup>
<b>International investment position - Net</b>	<b>(115,369.8)</b>	<b>(118,687.7)</b>	<b>(113,417.5)</b>	<b>(117,138.4)</b>	<b>(119,572.4)</b>	<b>(121,056.0)</b>
<b>A. Assets</b>	<b>23,674.0</b>	<b>27,085.1</b>	<b>26,706.1</b>	<b>27,617.9</b>	<b>28,873.8</b>	<b>30,807.7</b>
<b>1. Direct investment</b>	<b>2,019.8</b>	<b>2,030.5</b>	<b>2,007.4</b>	<b>1,996.1</b>	<b>2,125.5</b>	<b>2,096.0</b>
1.1 Equity and investment fund shares	1,907.4	1,918.0	1,895.4	1,883.7	2,013.1	1,983.6
1.1.1 Direct investor in direct investment enterprises	1,907.4	1,918.0	1,895.4	1,883.7	2,013.1	1,983.6
1.1.2 Direct investment enterprises in direct investor (reverse invst.)	-	-	-	-	-	-
1.1.3 Between fellow enterprises	-	-	-	-	-	-
1.2 Debt instruments	112.4	112.4	112.0	112.4	112.4	112.4
1.2.1 Direct investor in direct investment enterprises	4.5	4.5	4.5	4.5	4.5	4.5
1.2.2 Direct investment enterprises in direct investor (reverse invst.)	107.9	107.9	107.6	107.9	107.9	107.9
1.2.3 Between fellow enterprises	-	-	-	-	-	-
<b>2. Portfolio investment</b>	<b>320.6</b>	<b>324.3</b>	<b>324.3</b>	<b>318.1</b>	<b>354.9</b>	<b>328.9</b>
2.1 Equity and investment fund shares	159.4	159.3	159.3	153.1	153.1	127.1
2.1.1 Central bank	-	-	-	-	-	-
2.1.2 Deposit-taking corporations, except the central bank	145.8	147.2	147.2	147.2	147.2	121.2
2.1.3 General government	-	-	-	-	-	-
2.1.4 Other sectors	13.6	12.1	12.1	5.9	5.9	5.9
2.2 Debt securities	161.2	165.0	165.0	165.0	201.8	201.8
2.2.1 Central bank	-	-	-	-	-	-
2.2.2 Deposit-taking corporations, except the central bank	139.8	142.8	142.8	142.8	178.6	178.6
2.2.3 General government	-	-	-	-	-	-
2.2.4 Other sectors	21.4	22.2	22.2	22.2	23.2	23.2
<b>3. Financial derivatives (other than reserves) and employee stock options</b>	<b>21.5</b>	<b>19.0</b>	<b>26.9</b>	<b>13.9</b>	<b>8.8</b>	<b>17.0</b>
<b>4. Other investment</b>	<b>8,160.3</b>	<b>8,268.7</b>	<b>8,142.7</b>	<b>7,891.5</b>	<b>8,959.1</b>	<b>9,559.9</b>
4.1 Other equity	158.0	158.0	158.0	199.0	199.0	199.0
4.2 Currency and deposits	2,093.7	1,947.3	1,914.2	2,066.2	3,005.0	3,286.6
4.3 Loans	127.8	127.8	127.8	127.8	127.8	127.8
4.4 Insurance, pension, and standardized guarantee schemes	-	-	-	-	-	-
4.5 Trade credit and advances	4,933.0	5,113.5	5,088.5	4,833.3	4,884.5	5,109.8
4.6 Other accounts receivable	847.9	922.2	854.2	665.2	742.8	836.7
<b>5. Reserve assets</b>	<b>13,151.8</b>	<b>16,442.7</b>	<b>16,204.8</b>	<b>17,398.3</b>	<b>17,425.5</b>	<b>18,805.9</b>
5.1 Monetary gold	3,086.5	3,164.8	3,343.5	3,674.5	3,921.3	3,922.8
5.2 Special drawing rights	288.6	251.7	211.3	175.8	138.4	101.5
5.3 Reserve position in the fund	0.2	0.2	0.2	0.2	0.2	0.2
5.4 Other reserve assets	9,776.5	13,026.0	12,649.9	13,547.9	13,365.6	14,781.4
5.4.1 Currency and deposits	5,114.3	4,966.5	6,149.4	5,339.7	8,107.4	8,612.0
5.4.2 Securities	2,898.1	3,671.2	3,868.2	2,902.7	2,754.2	4,457.7
5.4.3 Financial derivatives	...	...	...	...	...	...
5.4.4 Other claims	1,764.1	4,388.3	2,632.3	5,305.6	2,504.0	1,711.7

## 4.10 International Investment Position of Pakistan

(Million US \$)

	2019		2020			
	Sep	Dec	Mar	Jun	Sep <sup>R</sup>	Dec <sup>P</sup>
<b>B. Liabilities</b>	<b>139,043.8</b>	<b>145,772.9</b>	<b>140,123.6</b>	<b>144,756.4</b>	<b>148,446.3</b>	<b>151,863.7</b>
<b>1. Direct investment</b>	<b>32,211.1</b>	<b>34,928.5</b>	<b>31,713.6</b>	<b>33,231.6</b>	<b>35,380.2</b>	<b>35,774.0</b>
1.1 Equity and investment fund shares	28,624.4	31,099.1	27,498.8	28,809.6	30,992.3	31,727.9
1.1.1 Direct investor in direct investment enterpr.	28,624.4	31,099.1	27,498.8	28,809.6	30,992.3	31,727.9
1.1.2 Direct investment enterpr. in direct investor (reverse investment)	-	-	-	-	-	-
1.1.3 Between fellow enterprises	-	-	-	-	-	-
1.2 Debt instruments	3,586.7	3,829.4	4,214.8	4,421.9	4,387.9	4,046.1
1.2.1 Direct investor in direct investment enterpr.	3,586.5	3,829.2	4,214.6	4,421.7	4,387.7	4,045.9
1.2.2 Direct investment enterpr. in direct investor (reverse investment)	0.2	0.2	0.2	0.2	0.2	0.2
1.2.3 Between fellow enterprises	-	-	-	-	-	-
<b>2. Portfolio investment</b>	<b>10,123.7</b>	<b>10,952.7</b>	<b>9,667.3</b>	<b>9,197.4</b>	<b>9,642.6</b>	<b>9,350.3</b>
2.1 Equity and investment fund shares	3,447.9	4,062.6	2,900.9	3,072.2	3,435.7	3,299.7
2.1.1 Central bank	...	...	...	...	...	...
2.1.2 Deposit-taking corp. except central bank	1,303.5	1,561.7	1,115.4	1,132.3	1,286.9	1,286.9
2.1.3 General government	...	...	...	...	...	...
2.1.4 Other sectors	2,144.4	2,500.9	1,785.5	1,939.9	2,148.8	2,012.9
2.2 Debt securities	6,675.9	6,890.0	6,766.5	6,125.2	6,206.9	6,050.5
2.2.1 Central bank	-	-	-	-	-	-
2.2.2 Deposit-taking corp. except central bank	-	-	-	-	-	-
2.2.3 General government	6,663.9	6,878.0	6,754.5	6,113.2	6,194.9	6,038.5
2.2.4 Other sectors	12.0	12.0	12.0	12.0	12.0	12.0
<b>3. Financial derivatives (other than reserves) and employee stock options</b>	<b>13.5</b>	<b>7.6</b>	<b>27.4</b>	<b>14.4</b>	<b>8.7</b>	<b>3.2</b>
<b>4. Other investment</b>	<b>96,695.5</b>	<b>99,884.1</b>	<b>98,715.2</b>	<b>102,313.1</b>	<b>103,414.8</b>	<b>106,736.3</b>
4.1 Other equity	...	...	...	...	...	...
4.2 Currency and deposits	7,879.8	7,457.1	7,531.1	7,624.5	6,685.0	6,053.6
4.3 Loans	83,424.5	86,971.8	85,752.2	89,346.1	91,187.2	93,975.5
4.4 Insurance, pension, and SGS	-	-	-	-	-	-
4.5 Trade credit and advances	873.4	873.4	873.4	873.4	873.4	873.4
4.6 Other accounts payable	3,170.1	3,214.8	3,209.4	3,109.2	3,277.7	4,410.0
4.7 Special drawing rights (Net incurrence of liab)	1,347.7	1,367.0	1,349.2	1,360.0	1,391.5	1,423.8

Source: Statistics & Data Warehouse Department, SBP

Archive Link: <http://www.sbp.org.pk/ecodata/Invest-BPM6.xls>

## 4.11 Gold and Foreign Exchange Reserves

(Million US Dollars)

End Period	Foreign exchange reserves with															SBP and Scheduled Banks	
	Gold*	SBP						Scheduled Banks							Total Reserve Asset** (1+5+13)	Total Liquid FX Reserve (6+14)	
		Cash Foreign Currency	Nostro <sup>1</sup>	ACU Bal Net	Total SBP Reserves (2+3+4)**	Net Reserves with SBP (2+4)	Deposits			Utilizations			Total Banks' Reserves (7+8+9-10-11-12)**	Net Reserves With Banks (7-10)			
							FE-25 <sup>2</sup>	Trade Nostro	Placement abroad (other than FE-25)	Trade Finance	FE-25 Placements in Pakistan	Others					
1	2	3	4	a	5	6	7	8	9	10	11	12	13	14	15	16	
FY 16	2,739	645	49	17,497		18,192	18,143	6,323	(574)	3	1,367	74	1,702	2,608	4,956	<b>23,539</b>	<b>23,098</b>
FY 17	2,578	607	98	15,538		16,243	16,145	6,963	(232)	139	1,705	69	2,057	3,039	5,258	<b>21,861</b>	<b>21,403</b>
FY18	2,598	488	101	9,277		9,866	9,765	7,591	(532)	47	973	60	3,136	2,938	6,618	<b>15,402</b>	<b>16,384</b>
FY19	2,928	347	489	6,939		7,774	7,285	7,823	(714)	2	626	62	3,545	2,878	7,196	<b>13,580</b>	<b>14,482</b>
FY20	3,674	176	369	11,956	49	12,550	12,132	7,526	28	2	771	53	4,059	2,672	6,754	<b>18,896</b>	<b>18,886</b>
2020 Mar	3,343	211	553	10,633		11,397	10,845	7,492	96	2	1,240	53	3,674	2,624	6,253	<b>17,365</b>	<b>17,098</b>
Apr	3,538	206	551	12,124		12,881	12,329	7,460	(138)	2	1,051	54	3,995	2,224	6,409	<b>18,643</b>	<b>18,738</b>
May	3,592	171	508	10,191		10,870	10,362	7,517	(4)	2	936	42	4,091	2,445	6,581	<b>16,908</b>	<b>16,943</b>
Jun	3,674	176	369	11,956	49	12,550	12,132	7,526	28	2	771	53	4,059	2,672	6,754	<b>18,896</b>	<b>18,886</b>
Jul	4,083	175	227	12,367	29	12,798	12,542	7,746	308	2	690	51	3,947	3,368	7,056	<b>20,249</b>	<b>19,599</b>
Aug	4,068	140	149	12,598	26	12,913	12,738	7,810	545	3	641	66	4,184	3,467	7,169	<b>20,448</b>	<b>19,907</b>
Sep	3,921	138	145	12,015	7	12,306	12,154	7,798	436	23	567	68	4,179	3,443	7,231	<b>19,670</b>	<b>19,385</b>
Oct	3,911	139	145	12,044	17	12,345	12,183	7,800	566	41	592	65	4,205	3,544	7,207	<b>19,800</b>	<b>19,390</b>
Nov	3,663	100	145	13,012	16	13,273	13,112	7,780	548	33	638	74	3,963	3,686	7,142	<b>20,621</b>	<b>20,254</b>
Dec	3,923	102	145	13,314	21	13,581	13,415	7,773	396	54	677	69	3,731	3,746	7,096	<b>21,250</b>	<b>20,511</b>
2021 Jan	3,873	101	145	12,930	20	13,196	13,031	7,794	390	33	676	74	3,737	3,730	7,118	<b>20,799</b>	<b>20,149</b>
Feb	3,622	64	145	12,911	48	13,167	12,975	7,830	370	53	700	74	3,763	3,715	7,130	<b>20,505</b>	<b>20,105</b>
Mar	3,514	417	145	13,077	31	13,669	13,493	7,819	26	23	709	79	3,826	3,255	7,110	<b>20,438</b>	<b>20,604</b>
Apr <sup>P</sup>	3,674	422	145	15,176	48	15,791	15,598	7,857	(60)	4	765	84	4,062	2,890	7,092	<b>22,356</b>	<b>22,690</b>

Source: Statistics & Data Warehouse Department, SBP

\* Excludes RBI Holding

\*\* Compiled as per IMF Balance of Payments Manual Guidelines

1. Excludes FE-13/CRR, unsettled claims on India and includes sinking fund.

2. Includes FE-13/CRR.

## 4.12 Foreign Currency Deposits

(Million US Dollars)

DESCRIPTION	2020									2021			
	Apr	May	Jun	Jul	Aug	Sep	Oct	Nov	Dec	Jan	Feb	Mar	Apr
<b>Foreign Currency Deposits</b>													
<b>A. FE-25 Deposits</b>	<b>7,459.8</b>	<b>7,516.7</b>	<b>7,525.6</b>	<b>7,746.4</b>	<b>7,809.8</b>	<b>7,798.0</b>	<b>7,799.6</b>	<b>7,779.9</b>	<b>7,772.9</b>	<b>7,794.1</b>	<b>7,830.3</b>	<b>7,818.9</b>	<b>7,856.8</b>
1. Resident	6,608.2	6,647.8	6,652.6	6,858.5	6,909.7	6,922.1	6,913.9	6,895.3	6,875.2	6,875.5	6,930.2	6,905.6	6,956.8
i) Demand Deposits	2,707.2	2,779.6	2,811.7	2,801.9	2,786.3	2,663.7	2,704.8	2,720.3	2,700.5	2,762.0	2,840.7	2,799.3	2,781.5
ii) Savings Deposits	2,389.2	2,364.9	2,386.8	2,555.0	2,585.2	2,709.7	2,652.6	2,648.1	2,767.4	2,763.3	2,764.0	2,757.2	2,618.7
iii) Time Deposits	1,511.8	1,503.3	1,454.1	1,501.6	1,538.2	1,548.8	1,556.5	1,526.9	1,407.2	1,350.1	1,325.4	1,349.2	1,556.7
2. Non- Resident	851.6	868.9	873.1	887.9	900.1	875.9	885.7	884.7	897.7	918.6	900.1	913.3	900.0
i) Demand Deposits	445.6	465.3	480.4	489.5	502.9	482.1	487.8	491.9	502.1	515.5	499.0	512.6	500.1
ii) Savings Deposits	287.1	287.6	289.7	295.9	294.4	293.5	295.8	292.1	293.0	298.5	301.7	298.8	297.8
iii) Time Deposits	118.8	116.0	103.0	102.4	102.7	100.3	102.2	100.7	102.5	104.6	99.4	101.8	102.1
<b>B. Old FCAs Deposits</b>	<b>11.0</b>	<b>11.0</b>	<b>11.0</b>	<b>11.0</b>	<b>11.0</b>	<b>10.9</b>	<b>10.9</b>	<b>10.9</b>	<b>10.9</b>	<b>11.0</b>	<b>11.0</b>	<b>10.9</b>	<b>10.8</b>
1. Resident	8.8	8.8	8.8	8.8	8.7	8.7	8.7	8.6	8.7	8.7	8.7	8.6	8.5
2. Non- Resident	2.2	2.2	2.2	2.2	2.2	2.2	2.2	2.3	2.3	2.3	2.3	2.3	2.3
<b>Total (A+B)</b>	<b>7,470.8</b>	<b>7,527.7</b>	<b>7,536.6</b>	<b>7,757.4</b>	<b>7,820.8</b>	<b>7,809.0</b>	<b>7,810.5</b>	<b>7,790.8</b>	<b>7,783.8</b>	<b>7,805.0</b>	<b>7,841.3</b>	<b>7,829.8</b>	<b>7,867.6</b>
<b>FE-25 Deposits Utilization</b>													
1. Financing	1,050.7	935.8	771.3	690.0	640.6	566.8	592.5	638.3	676.8	676.4	700.5	708.7	765.0
i) Exports Financing	451.2	375.8	321.7	288.8	271.9	244.0	252.0	263.7	280.2	268.0	281.3	273.1	279.6
a) Pre-shipment	256.6	215.5	168.7	140.6	122.8	109.1	113.9	125.8	130.0	129.0	123.6	125.0	130.1
b) Post-shipment	194.6	160.3	153.1	148.3	149.1	134.9	138.1	137.9	150.2	139.0	157.7	148.1	149.5
ii) Import Financing	599.4	560.0	449.5	401.2	368.7	322.8	340.5	374.6	396.6	408.4	419.2	435.6	485.4
2. Placements	1,461.7	1,452.9	1,627.6	1,828.7	1,932.3	1,843.6	1,970.2	2,041.0	2,189.0	2,222.7	2,337.3	2,308.2	2,111.3
i) With State Bank of Pakistan	1,135.8	1,129.2	1,133.9	1,166.3	1,167.9	1,163.8	1,163.0	1,169.7	1,256.7	1,168.6	1,230.0	1,196.0	1,172.7
a) CRR <sup>1</sup>	388.1	389.2	390.9	402.2	402.6	401.5	401.9	405.0	403.2	404.2	403.4	405.3	406.5
b) SCRR <sup>2</sup>	747.7	740.0	743.0	764.1	765.3	762.2	761.1	764.7	853.5	764.4	826.6	790.7	766.2
ii) With Banks	325.8	323.7	493.7	662.4	764.4	679.8	807.2	871.3	932.3	1,054.1	1,107.3	1,112.3	938.6
a) Within Pakistan	53.9	41.7	53.0	51.2	65.6	68.3	65.4	73.7	69.3	74.4	73.9	78.7	84.2
b) Outside Pakistan	271.9	282.0	440.7	611.2	698.8	611.5	741.9	797.6	863.0	979.7	1,033.4	1,033.5	854.4
3. Balances	952.2	1,036.6	1,067.7	1,280.5	1,052.6	1,209.1	1,032.3	1,137.6	1,176.0	1,158.3	1,029.6	976.1	918.9
i) Balance held abroad	646.8	691.8	664.2	834.8	582.6	723.0	534.6	623.3	658.5	641.0	550.0	506.1	484.5
ii) Cash in hand	305.4	344.7	403.5	445.6	470.0	486.1	497.7	514.4	517.5	517.3	479.6	470.0	434.4
4. Others	3,995.3	4,091.4	4,059.0	3,947.2	4,184.3	4,178.6	4,204.6	3,963.0	3,731.1	3,736.7	3,762.9	3,825.8	4,061.6

Note: The data relates to last working day of the month.

Source: Statistics & Data Warehouse Department, SBP

1. Cash Reserve Requirement

2. Special Cash Reserve Requirement

Archive Link: <http://www.sbp.org.pk/ecodata/fe25.xls>

## 4.13 Foreign Investment in Pakistan by Country

(Million US Dollars)

Sr.	COUNTRY	Apr FY 21 <sup>P</sup>			Jul-Apr FY 21 <sup>P</sup>			Jul-Apr FY 20 <sup>R</sup>		
		Direct Investment (Net)	Portfolio Investment (Net)	Total	Direct Investment (Net)	Portfolio Investment (Net)	Total	Direct Investment (Net)	Portfolio Investment (Net)	Total
<b>I</b>	<b>Foreign Private Investment</b>	<b>158.4</b>	<b>(15.0)</b>	<b>143.4</b>	<b>1,553.4</b>	<b>(280.2)</b>	<b>1,273.2</b>	<b>2,301.3</b>	<b>(182.7)</b>	<b>2,118.6</b>
1	Argentina	-	-	-	-	-	-	-	-	-
2	Australia	(1.9)	(0.1)	(2.0)	(19.8)	(0.3)	(20.1)	0.1	(3.5)	(3.4)
3	Austria	0.1	(0.4)	(0.3)	0.4	(0.4)	0.1	3.8	-	3.8
4	Bahrain	1.6	(..)	1.6	7.8	..	7.8	18.3	(3.2)	15.1
5	Bangladesh	-	-	-	-	-	-	-	-	-
6	Brunei	..	-	..	0.2	(..)	0.2	-	(0.1)	(0.1)
7	Canada	(..)	(0.3)	(0.3)	(0.2)	2.6	2.4	0.3	(5.4)	(5.1)
8	China	57.4	-	57.4	708.3	(1.0)	707.3	865.3	(0.2)	865.1
9	Denmark	(..)	-	(..)	(0.2)	0.2	..	0.4	-	0.4
10	Egypt	0.8	-	0.8	7.5	(2.1)	5.4	12.3	4.9	17.2
11	Finland	(0.2)	0.8	0.6	(0.8)	0.2	(0.7)	(4.9)	3.1	(1.8)
12	France	0.8	(..)	0.8	3.5	1.3	4.7	(0.6)	0.9	0.3
13	Germany	1.5	0.3	1.8	46.9	(0.8)	46.1	52.1	0.9	53.0
14	Hongkong	21.9	(..)	21.9	127.6	7.0	134.6	163.5	25.2	188.7
15	Indonesia	(..)	-	(..)	(0.2)	-	(0.2)	(0.1)	-	(0.1)
16	Iran	0.1	-	0.1	1.0	-	1.0	(..)	-	(..)
17	Ireland	..	0.9	0.9	0.5	(27.9)	(27.5)	0.1	(25.5)	(25.4)
18	Italy	3.2	-	3.2	30.0	-	30.0	49.2	..	49.2
19	Japan	(0.1)	-	(0.1)	(6.8)	0.6	(6.3)	61.4	0.7	62.1
20	Korea (South)	1.1	(0.1)	1.0	6.1	(0.1)	6.0	34.0	0.5	34.5
21	Kuwait	..	(0.4)	(0.4)	(1.5)	(1.1)	(2.6)	0.7	(2.0)	(1.2)
22	Lebanon	0.4	-	0.4	4.9	-	4.9	3.9	-	3.9
23	Libya	(0.1)	-	(0.1)	(0.4)	-	(0.4)	6.5	-	6.5
24	Luxembourg	0.1	(..)	0.1	2.6	(45.6)	(43.0)	20.8	(41.6)	(20.7)
25	Malaysia	1.5	-	1.5	30.8	-	30.8	44.6	-	44.6
26	Netherlands	(2.7)	(0.4)	(3.1)	62.7	(4.2)	58.5	108.5	3.1	111.6
27	NewZealand	-	-	-	1.2	-	1.2	-	..	..
28	Norway	(4.3)	-	(4.3)	(66.4)	..	(66.3)	288.6	..	288.6
29	Oman	0.1	-	0.1	1.0	0.1	1.1	1.1	..	1.2
30	Philippines	0.2	-	0.2	2.5	-	2.5	(0.1)	-	(0.1)
31	Poland	2.0	-	2.0	8.7	-	8.7	2.3	-	2.3
32	Portugal	..	-	..	0.5	-	0.5	-	-	-
33	Qatar	(..)	-	(..)	18.2	(..)	18.2	2.4	0.2	2.6
34	Saudi Arabia	0.6	..	0.7	6.8	..	6.8	22.5	0.3	22.8
35	Singapore	(0.3)	1.2	0.8	17.0	28.5	45.5	17.4	14.5	31.9
36	South Africa	-	-	-	0.2	-	0.2	-	-	-
37	Sri Lanka	..	-	..	19.6	-	19.6	10.5	-	10.5
38	Sweden	30.4	6.1	36.4	26.7	(9.6)	17.1	7.4	(5.2)	2.2
39	Switzerland	4.2	..	4.2	73.9	(28.9)	45.0	46.9	(..)	46.9
40	Thailand	(..)	-	(..)	3.2	-	3.2	0.6	-	0.6
41	Turkey	(1.5)	-	(1.5)	13.4	-	13.4	23.9	-	23.9
42	U.A. E	13.2	6.2	19.4	86.6	154.1	240.6	(31.0)	8.8	(22.2)
43	United Kingdom	13.8	4.0	17.8	118.7	(179.5)	(60.8)	102.7	(12.2)	90.6
44	United States of America	7.8	(31.6)	(23.8)	95.9	(162.6)	(66.6)	89.4	(94.3)	(4.9)
45	Others	6.8	(1.1)	5.7	115.0	(10.7)	104.3	276.5	(52.7)	223.8
<b>II</b>	<b>Foreign Public Investment</b>		<b>2,466.7</b>	<b>2,466.7</b>	-	<b>2,463.1</b>	<b>2,463.1</b>	-	<b>(234.5)</b>	<b>(234.5)</b>
	Debt Securities		2,466.7	2,466.7	-	2,463.1	2,463.1	-	(234.5)	(234.5)
	<b>Total</b>	<b>158.4</b>	<b>2,451.6</b>	<b>2,610.0</b>	<b>1,553.4</b>	<b>2,182.9</b>	<b>3,736.4</b>	<b>2,301.3</b>	<b>(417.3)</b>	<b>1,884.1</b>

Archive Link: [http://www.sbp.org.pk/ecodata/NIFP\\_Arch/index.asp](http://www.sbp.org.pk/ecodata/NIFP_Arch/index.asp)

Source: Statistics & Data Warehouse Department, SBP

## 4.14 Foreign Direct Investment Classified by Economic Groups

(Million US Dollars)

Sr.	SECTOR	Apr FY 21 <sup>P</sup>			Jul-Apr FY 21 <sup>P</sup>			Jul-Apr FY 20 <sup>R</sup>		
		Inflow	Outflow	Net FDI	Inflow	Outflow	Net FDI	Inflow	Outflow	Net FDI
1	Food	3.0	0.9	2.0	23.4	7.2	16.2	28.2	6.4	21.8
2	Food Packaging	-	1.0	(1.0)	-	5.0	(5.0)	8.3	4.9	3.4
3	Beverages	10.7	8.3	2.3	26.1	12.0	14.2	3.6	-	3.6
4	Tobacco & Cigarettes	0.3	1.1	(0.8)	2.8	10.6	(7.9)	6.1	2.1	3.9
5	Sugar	0.1	..	0.1	0.4	..	0.4	1.5	-	1.5
6	Textiles	0.6	4.3	(3.7)	20.6	10.9	9.7	37.7	4.8	32.9
7	Paper & Pulp	0.1	-	0.1	0.7	0.1	0.6	0.1	-	0.1
8	Leather & Leather Products	-	..	(..)	-	0.2	(0.2)	2.1	-	2.1
9	Rubber & Rubber Products	8.6	-	8.6	18.1	-	18.1	5.0	-	5.0
10	Chemicals	4.7	5.6	(1.0)	51.4	35.8	15.6	47.5	30.5	17.0
11	Petro Chemicals	0.1	-	0.1	8.1	-	8.1	0.3	-	0.3
12	Petroleum Refining	1.4	6.7	(5.2)	9.2	52.6	(43.4)	54.9	50.7	4.2
13	Mining & Quarrying	0.5	2.0	(1.5)	1.7	20.8	(19.1)	1.3	-	1.3
14	Oil & Gas Explorations	34.1	3.1	31.0	212.2	22.9	189.3	260.4	3.1	257.3
	<i>of which Privatization proceeds</i>	-	-	-	-	-	-	-	-	-
15	Pharmaceuticals & OTC Products	1.8	0.2	1.6	16.5	3.0	13.5	34.0	4.1	29.9
16	Cosmetics	0.1	-	0.1	3.5	1.0	2.5	2.0	-	2.0
17	Fertilizers	-	-	-	..	-	..	-	-	-
18	Cement	0.1	0.9	(0.7)	1.1	4.6	(3.5)	32.2	-	32.2
19	Ceramics	0.3	..	0.3	6.5	0.2	6.4	20.3	-	20.3
20	Basic Metals	..	-	..	0.2	-	0.2	2.5	-	2.5
21	Metal Products	0.2	-	0.2	0.2	-	0.2	1.2	-	1.2
22	Machinery other than Electrical	-	-	-	0.1	-	0.1	0.1	-	0.1
23	Electrical Machinery	5.0	..	5.0	110.6	0.6	109.9	143.5	0.1	143.4
24	Electronics	2.5	0.1	2.4	52.6	23.5	29.1	64.7	40.0	24.7
	I) Consumer/Household	1.3	..	1.3	50.7	23.5	27.2	61.9	40.0	21.9
	II) Industrial	1.1	..	1.1	2.0	..	1.9	2.8	-	2.8
25	Transport Equipment (Automobiles)	1.9	1.5	0.4	37.4	17.2	20.2	72.0	15.5	56.5
	I) Motorecycles	-	-	-	-	-	-	16.8	-	16.8
	II) Cars	1.7	1.5	0.2	16.1	17.2	(1.1)	48.7	1.9	46.8
	III) Buses, Trucks, Vans & Trail	0.2	-	0.2	21.3	-	21.3	6.4	13.5	(7.1)
26	Power	75.3	0.3	75.0	1,068.2	255.4	812.8	863.2	102.0	761.2
	I) Thermal	15.2	0.1	15.1	167.6	7.7	159.9	165.3	73.2	92.1
	<i>of which Privatization proceeds</i>	-	-	-	-	-	-	-	-	-
	II) Hydel	41.6	0.2	41.4	179.4	1.3	178.1	124.0	0.7	123.3
	III) Coal	18.5	..	18.5	721.2	246.4	474.8	573.9	28.2	545.7
27	Construction	1.5	1.3	0.2	41.8	19.1	22.7	21.3	8.9	12.3
28	Trade	2.1	5.0	(2.9)	138.3	33.2	105.1	64.3	28.4	35.9
29	Transport	4.5	9.8	(5.3)	19.0	66.9	(47.9)	18.4	19.6	(1.1)
30	Tourism	1.0	-	1.0	9.7	-	9.7	..	-	..
31	Storage Facilities	0.4	-	0.4	4.5	-	4.5	31.5	1.5	30.0
32	Communications	39.4	7.8	31.7	174.5	155.2	19.3	635.2	124.9	510.3
	1) Telecommunications	37.5	7.4	30.1	116.9	149.5	(32.5)	600.0	122.4	477.7
	<i>of which Privatization proceeds</i>	-	-	-	-	-	-	-	-	-
	2) Information Technology	2.0	0.4	1.6	57.5	5.7	51.8	35.2	2.5	32.7
	I) Software Development	0.9	..	0.9	12.0	..	12.0	13.6	0.5	13.2
	II) Hardware Development	..	..	..	0.3	0.2	0.1	0.4	1.6	(1.2)
	III) I.T. Service	1.1	0.3	0.7	45.2	5.5	39.7	21.1	0.4	20.7
	3) Postal & Courier Services	-	-	-	-	-	-	-	-	-
33	Financial Business	29.7	8.8	20.9	310.4	97.4	213.0	279.5	37.2	242.3
	<i>of which Privatization proceeds</i>	-	-	-	-	-	-	-	-	-
34	Social Services	0.1	0.2	(0.1)	10.9	0.9	10.0	8.4	-	8.4
35	Personal Services	2.8	4.6	(1.8)	46.2	38.3	7.9	68.5	80.2	(11.7)
36	Others	4.7	5.8	(1.1)	78.6	57.4	21.2	71.4	25.2	46.2
	<b>TOTAL</b>	<b>237.6</b>	<b>79.2</b>	<b>158.4</b>	<b>2,505.5</b>	<b>952.0</b>	<b>1,553.4</b>	<b>2,891.4</b>	<b>590.1</b>	<b>2,301.3</b>
	<i>TOTAL without Privatization proceeds</i>	<i>237.6</i>	<i>79.2</i>	<i>158.4</i>	<i>2,505.5</i>	<i>952.0</i>	<i>1,553.4</i>	<i>2,891.4</i>	<i>590.1</i>	<i>2,301.3</i>

Archive Link: [http://www.sbp.org.pk/ecodata/NIFP\\_Arch/index.asp](http://www.sbp.org.pk/ecodata/NIFP_Arch/index.asp)

Source: Statistics & Data Warehouse Department, SBP



## 4.15 Balance of Trade

(a) State Bank of Pakistan

(Million US Dollars)

PERIOD	Exports (BOP)		Period Growth Rate %	Imports (BOP)		Period Growth Rate %	Balance of Trade	
	Value (a)	Cumulative (b)		Value (c)	Cumulative (d)		a-c	b-d
FY16	21,972	--	(8.8)	41,118	--	(0.4)	(19,146)	--
FY17	22,003	--	0.1	48,001	--	16.7	(25,998)	--
FY18	24,768	--	12.6	55,671	--	16.0	(30,903)	--
FY19	24,257	--	(2.1)	51,869	--	(6.8)	(27,612)	--
FY20	22,536	--	(7.1)	43,645	--	(15.9)	(21,109)	--
2020 <sup>P</sup> Mar	1,821	18,281	1.3	3,310	34,136	(13.2)	(1,489)	(15,855)
Apr	1,423	19,704	(2.1)	3,144	37,280	(14.2)	(1,721)	(17,576)
May	1,259	20,963	(6.7)	2,805	40,085	(16.2)	(1,546)	(19,122)
Jun	1,573	22,536	(7.1)	3,560	43,645	(15.9)	(1,987)	(21,109)
Jul	1,885	1,885	(15.0)	3,557	3,557	(15.8)	(1,672)	(1,672)
Aug	1,514	3,399	(17.4)	3,241	6,798	(12.6)	(1,727)	(3,399)
Sep	1,955	5,354	(10.7)	3,839	10,637	(5.7)	(1,884)	(5,283)
Oct	1,969	7,323	(10.5)	3,482	14,119	(5.4)	(1,513)	(6,796)
Nov	2,239	9,562	(7.1)	4,067	18,186	(2.7)	(1,828)	(8,624)
Dec	2,253	11,815	(4.8)	5,015	23,201	(0.5)	(2,762)	(11,386)
2021 <sup>P</sup> Jan	2,097	13,912	(3.8)	4,433	27,634	1.4	(2,336)	(13,722)
Feb	2,176	16,088	(2.3)	4,501	32,135	4.2	(2,325)	(16,047)
Mar <sup>R</sup>	2,610	18,698	2.3	5,205	37,340	9.4	(2,595)	(18,642)
Apr	2,295	20,993	6.5	4,969	42,309	13.5	(2,674)	(21,316)

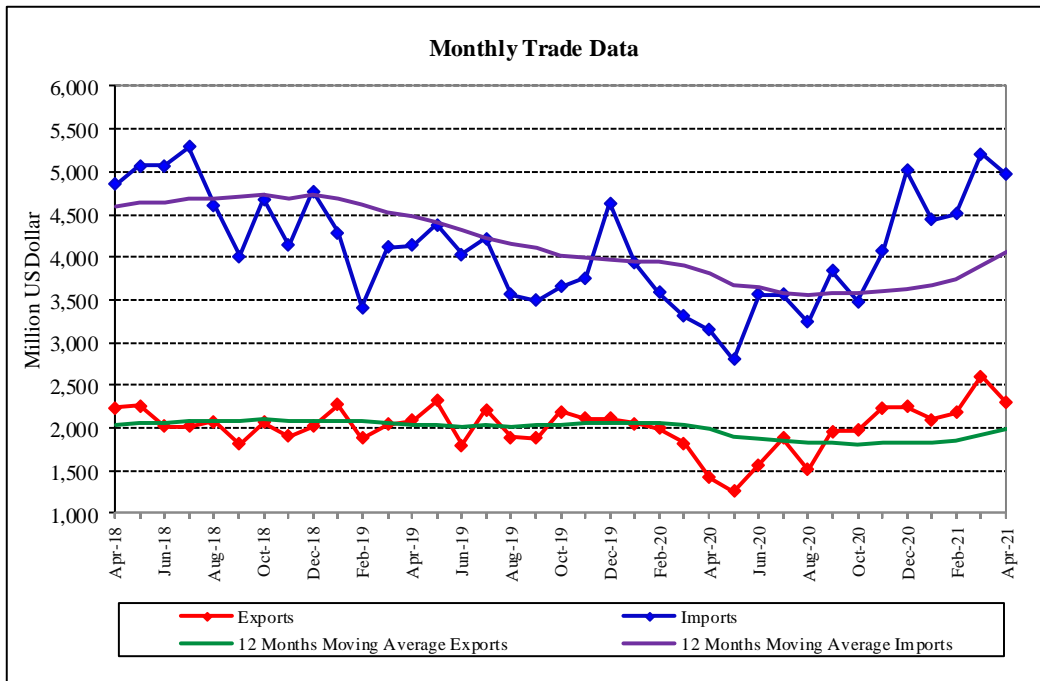
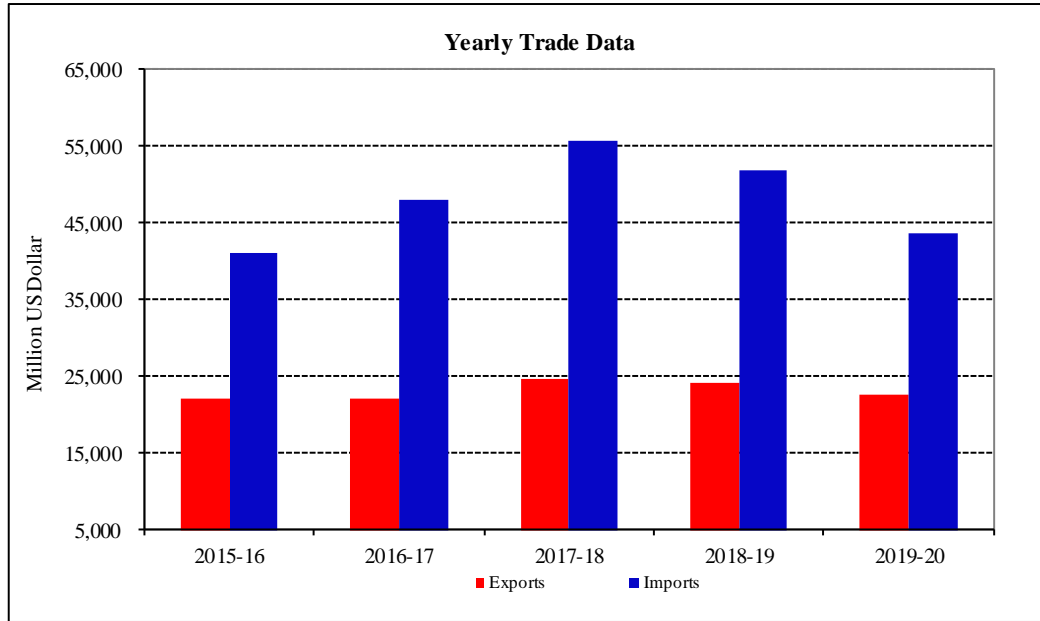
Trade data compiled by Pakistan Bureau of Statistics and State Bank of Pakistan may differ from each other due to the following reasons: -

- 1- The SBP Exports (BOP) & Imports (BOP) include general merchandise, repairs on goods and goods procured on parts by carriers. The SBP export and imports are based on realization of export proceeds and import payments made through the banking channel. Information on exports and imports unaccounted for by the banking channel are collected from the relevant sources and added to the exports/imports data reported by banks to arrive at the overall exports and imports. The trade data of PBS is, on the other hand, based on physical movement of goods crossing the custom boundaries of Pakistan.
- 2- The SBP data is generated merchandise based on Balance of Payment Manual (BPM6), whereas PBS data is on Carriage Insurance & Freight (c. i. f.) basis.
- 3- Cumulative figures are of Financial Year (Jul-Jun).

Archive Link: [http://www.sbp.org.pk/ecodata/exp\\_import\\_BOP\\_Arch.xls](http://www.sbp.org.pk/ecodata/exp_import_BOP_Arch.xls)

# Balance of Trade

(a) State Bank of Pakistan



## 4.15 Balance of Trade

(b) Pakistan Bureau of Statistics

(Million US Dollars)

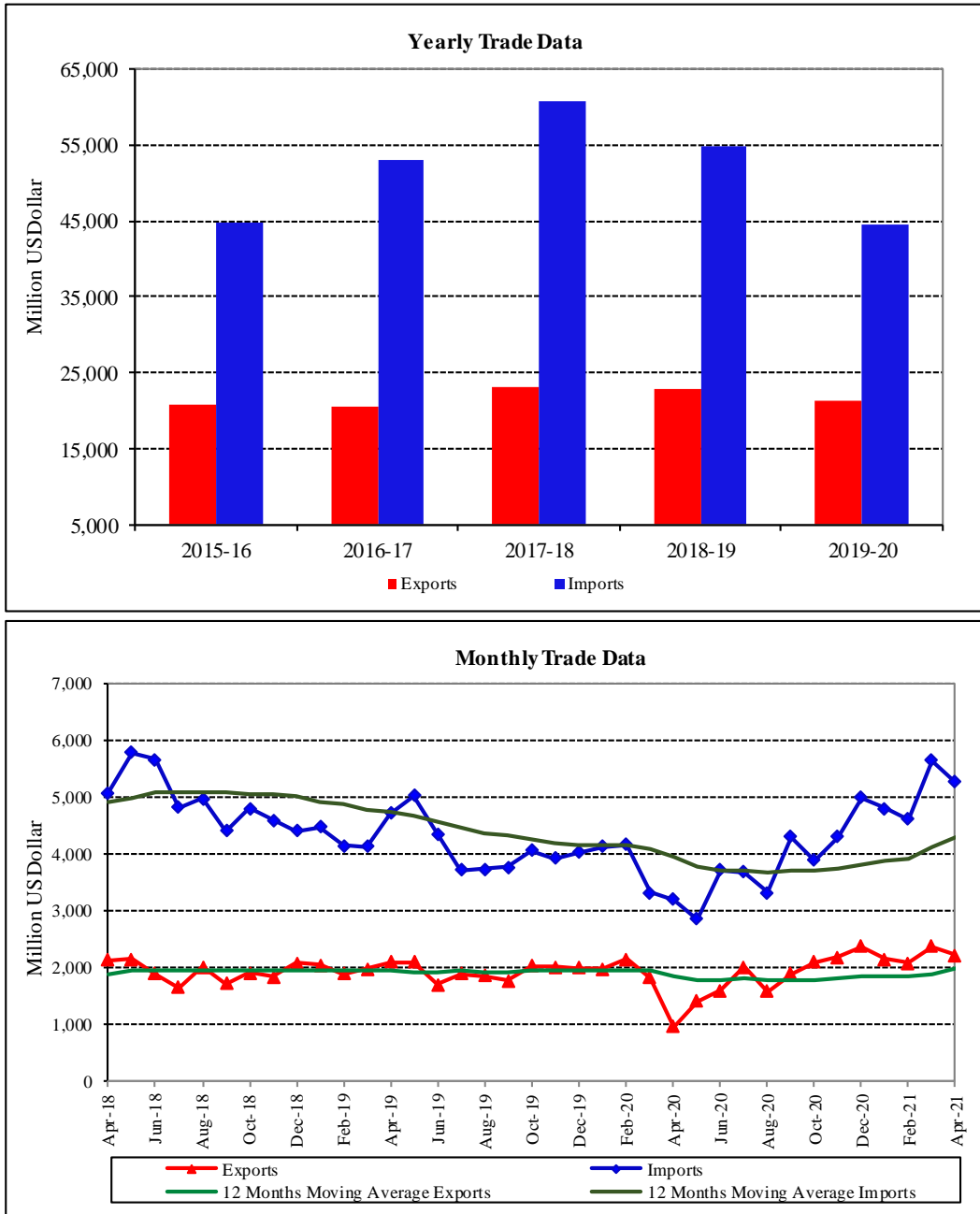
PERIOD	Exports (a)	Re-exports (b)	Cumulative (c)	Period Growth Rate %	Imports (d)	Re-imports (e)	Cumulative (f)	Period Growth Rate %	Balance of Trade	
									(a+b)-(d+e)	(c-f)
FY16	20,786	178	--	(12.17)	44,685	200	--	(2.55)	(23,921)	-
FY17	20,422	353	--	(0.90)	52,910	212	--	18.35	(32,347)	-
FY18	23,212	359	--	13.46	60,795	259	--	14.93	(37,482)	-
FY19	22,958	381	--	(0.98)	54,763	290	--	(9.83)	(31,713)	-
FY20	21,394	420	--	(6.54)	44,553	30	--	(19.02)	(22,769)	-
2020 Mar	1,810	19	17,706	2.08	3,308	1	34,815	(14.93)	(1,479)	(17,109)
Apr	955	5	18,666	(4.07)	3,202	2	38,018	(16.74)	(2,243)	(19,352)
May	1,396	104	20,166	(6.53)	2,857	3	40,878	(19.37)	(1,360)	(20,711)
Jun	1,599	49	21,814	(6.54)	3,703	2	44,583	(19.02)	(2,058)	(22,769)
Jul	2,001	18	2,019	2.88	3,674	2	3,676	(1.11)	(1,657)	(1,657)
Aug	1,584	18	3,621	(5.71)	3,316	4	6,995	(5.96)	(1,718)	(3,374)
Sep	1,887	17	5,525	(2.21)	4,297	4	11,296	0.80	(2,396)	(5,771)
Oct	2,101	9	7,635	(0.85)	3,890	2	15,188	(0.48)	(1,782)	(7,552)
Nov	2,171	12	9,818	0.94	4,292	4	19,484	1.54	(2,113)	(9,666)
Dec	2,366	6	12,190	3.88	4,986	4	24,474	5.44	(2,619)	(12,284)
2021 Jan	2,145	4	14,339	4.51	4,803	3	29,280	7.11	(2,657)	(14,942)
Feb	2,068	11	16,417	3.41	4,601	8	33,889	7.57	(2,530)	(17,472)
Mar	2,364	8	18,790	6.12	5,631	3	39,524	13.53	(3,262)	(20,734)
Apr <sup>P</sup>	2,219	-	21,008	12.55	5,260	-	44,784	17.80	(3,041)	(23,775)

Trade data compiled by Pakistan Bureau of Statistics and State Bank of Pakistan may differ from each other due to the following reasons: -

1. The SBP Exports (BOP) & Imports (BOP) include general merchandise, repairs on goods and goods procured on parts by carriers. The SBP export and imports are based on realization of export proceeds and import payments made through the banking channel. Information on exports and imports unaccounted for by the banking channel are collected from the relevant sources and added to the exports/imports data reported by banks to arrive at the overall exports and imports. The trade data of PBS is on the other hand, based on physical movement of goods crossing the custom boundaries of Pakistan.
- 2- The SBP data is gendered merchandise based on Balance of Payment Manual (BPM6), whereas PBS data is on Carriage Insurance & Freight (c. i. f.) basis.

# Balance of Trade

(b) Pakistan Bureau of Statistics



## 4.16 Exports by Selected Commodities

(a) State Bank of Pakistan

(Thousand US Dollars)

COMMODITIES	FY19	FY20	2020 <sup>P</sup>			2021 <sup>P</sup>			
			Mar	Apr	Dec	Jan	Feb	Mar <sup>R</sup>	Apr
<b>A. Food Group</b>	<b>4,647,626</b>	<b>4,538,814</b>	<b>391,563</b>	<b>359,810</b>	<b>433,742</b>	<b>439,783</b>	<b>393,791</b>	<b>500,749</b>	<b>438,582</b>
1 Rice	2,162,752	2,273,864	198,355	205,785	234,631	240,526	182,137	238,966	211,188
A) Basmati	686,926	850,663	70,757	79,052	87,989	74,080	64,776	79,166	73,648
B) Others	1,475,826	1,423,201	127,598	126,733	146,642	166,445	117,361	159,799	137,540
2 Fish & Fish Preparations	459,880	417,945	31,409	30,092	35,281	24,595	28,418	42,245	53,388
3 Fruits	437,981	425,679	44,162	27,665	40,220	56,576	62,644	58,094	37,585
4 Vegetables/Leguminous vegetable	260,986	312,910	38,547	23,155	22,045	28,066	32,681	40,461	28,182
5 Tobacco	24,839	35,424	2,569	2,562	1,247	1,483	1,514	3,632	3,341
6 Wheat	46,263	4,649	-	-	-	-	-	-	-
7 Spices	87,871	90,889	7,921	7,775	7,818	8,233	7,816	10,527	9,942
8 Oil Seeds, Nuts and Kernals	66,815	29,506	518	524	13,166	10,785	8,913	15,795	12,476
9 Sugar	236,667	104,660	-	-	-	-	-	-	-
10 Meat and Meat Preparations	242,360	309,819	25,955	27,365	32,527	29,809	29,673	34,871	33,548
11 All Other Food Items	621,212	533,470	42,127	34,886	46,807	39,711	39,996	56,158	48,933
<b>B. Textile Group</b>	<b>13,580,585</b>	<b>12,798,666</b>	<b>1,098,280</b>	<b>827,758</b>	<b>1,248,659</b>	<b>1,199,643</b>	<b>1,187,664</b>	<b>1,416,347</b>	<b>1,277,521</b>
12 Raw Cotton	20,964	18,400	215	134	485	419	72	146	40
13 Cotton Yarn	1,201,646	1,080,814	71,087	71,906	56,996	57,091	62,121	98,690	95,823
14 Cotton Cloth	2,174,273	1,941,695	162,574	115,204	164,072	157,021	156,255	171,017	159,127
15 Cotton Carded or Combed	768	458	32	-	23	-	-	63	64
16 Yarn Other than Cotton Yarn	32,028	40,805	1,917	1,528	3,434	2,317	2,390	3,981	3,216
17 Knitwear	2,854,216	2,688,395	217,170	167,113	293,903	281,357	279,164	327,769	291,717
18 Bed Wear	2,347,220	2,229,951	190,293	155,030	247,739	250,722	216,724	263,451	223,727
19 Towels	712,910	680,074	64,245	42,816	66,696	70,967	81,480	96,372	82,503
20 Tents, Canvas & Tarpaulin	86,267	91,518	12,898	4,890	16,460	8,746	8,996	11,281	7,351
21 Readymade Garments	2,568,259	2,595,179	253,244	175,157	258,632	237,317	236,536	280,754	265,043
22 Art, Silk & Synthetic Textile	284,065	297,735	26,067	16,443	27,741	24,852	30,519	33,539	32,076
23 Makeup Articles (incl. Other Tex)	701,164	584,676	50,933	43,397	55,129	55,567	59,663	61,353	59,920
24 Other Textile Materials	596,804	548,968	47,606	34,138	57,350	53,268	53,744	67,930	56,915
<b>C. Petroleum Group</b>	<b>675,652</b>	<b>368,683</b>	<b>18,996</b>	<b>17,565</b>	<b>21,352</b>	<b>6,797</b>	<b>30,096</b>	<b>16,379</b>	<b>34,954</b>
25 Petroleum Crude	258,273	172,294	13,228	16,215	11,017	-	15,197	6,711	12,500
26 Petroleum Products	171,866	75,645	1,375	1,182	344	2,019	4,593	3,432	4,434
27 Solid Fuel including Naphtha	245,514	120,745	4,392	167	9,992	4,778	10,307	6,236	18,020
<b>D. Other Manufacture</b>	<b>3,821,627</b>	<b>3,522,472</b>	<b>320,032</b>	<b>246,975</b>	<b>316,801</b>	<b>281,077</b>	<b>292,132</b>	<b>366,300</b>	<b>387,564</b>
28 Carpets, Rugs & Mats	78,291	68,372	5,117	2,300	7,163	6,907	6,680	7,671	6,956
29.Sports Goods	518,919	458,302	40,168	24,588	38,069	30,175	35,335	43,046	38,330
30 Leather Tanned	263,871	185,040	16,335	9,239	13,506	11,692	11,210	14,664	16,002
31.Leanth Manufactures	503,191	479,569	39,359	28,819	50,513	45,885	41,272	50,402	43,070
32.Footwear	129,320	134,170	12,171	7,933	10,661	9,378	11,385	11,550	11,373
33 Surgical Goods & Medical Instr.	437,782	411,080	37,700	22,207	43,165	42,192	35,664	47,015	36,565
34 Cutlery	70,453	70,490	5,306	3,678	8,852	6,986	7,764	8,611	7,082
35 Onyx Manufactured	6,764	5,862	500	201	539	654	1,013	693	1,303
36.Chemical and Pharmaceutica Products	1,227,070	1,074,175	111,761	119,247	96,261	72,202	89,891	116,267	116,909
37.Engineering Goods	238,844	301,504	21,782	10,721	22,972	23,348	23,438	33,621	70,863
38 Gems	4,906	7,451	564	435	484	598	1,290	498	856
39 Jewellery	5,597	6,704	765	702	1,094	1,363	1,297	1,579	925
40 Furniture	3,154	2,603	326	49	360	458	324	724	615
41 Molasses	11,723	5,018	-	1,984	24	15	-	15	20
42 Handicrafts	50	126	4	-	-	-	-	-	148
43 Cement	291,938	278,354	24,452	11,111	19,972	26,412	23,819	26,756	33,680
44 Guar and Guar Products	29,753	33,652	3,721	3,761	3,164	2,811	1,748	3,190	2,868
<b>E. All Others</b>	<b>1,304,274</b>	<b>1,312,164</b>	<b>115,795</b>	<b>71,342</b>	<b>195,879</b>	<b>170,503</b>	<b>152,962</b>	<b>216,358</b>	<b>181,820</b>
Export Receipts (Banks)	24,029,764	22,540,800	1,944,666	1,523,450	2,216,434	2,097,804	2,056,645	2,516,133	2,320,441
<b>F. Other Exports</b>	<b>418,295</b>	<b>211,941</b>	<b>(109,807)</b>	<b>(88,517)</b>	<b>53,109</b>	<b>15,686</b>	<b>133,086</b>	<b>107,646</b>	<b>(11,670)</b>
<b>G. Less: Freight and insurance</b>	<b>191,085</b>	<b>216,682</b>	<b>13,838</b>	<b>11,884</b>	<b>16,539</b>	<b>16,539</b>	<b>13,774</b>	<b>13,774</b>	<b>13,774</b>
<b>Total Export BOP</b>	<b>24,256,973</b>	<b>22,536,060</b>	<b>1,821,021</b>	<b>1,423,048</b>	<b>2,253,005</b>	<b>2,096,951</b>	<b>2,175,957</b>	<b>2,610,005</b>	<b>2,294,996</b>

Note: Other exports includes land borne export, export of samples, export processing zone, outstanding export bills and refund & rebate, repairs on goods, goods procured on ports by carriers less freight on exports.

Archive Link: [http://www.sbp.org.pk/ecodata/Exports-\(BOP\)-Commodities.xls](http://www.sbp.org.pk/ecodata/Exports-(BOP)-Commodities.xls)

## 4.16 Exports by Selected Commodities

(b) Pakistan Bureau of Statistics

(Thousand US Dollars)

COMMODITIES	FY19	FY20	2020			2021			
			Mar	Apr	Dec	Jan	Feb	Mar	Apr <sup>P</sup>
<b>A. Food Group</b>	<b>4,607,398</b>	<b>4,361,193</b>	<b>362,550</b>	<b>339,469</b>	<b>493,004</b>	<b>412,483</b>	<b>410,775</b>	<b>477,668</b>	<b>387,080</b>
1 Rice	2,069,619	2,175,521	196,537	223,033	232,676	194,245	180,288	222,507	189,551
a) Basmati	634,532	783,276	70,042	91,293	31,836	53,305	48,498	77,944	66,992
b) Others	1,435,087	1,392,245	126,495	131,740	200,840	140,940	131,790	144,563	122,559
2 Fish & Fish Preparations	438,710	406,656	38,669	27,692	28,662	25,032	30,803	52,583	47,878
3 Fruits	415,498	431,728	32,910	9,333	83,830	64,312	52,847	38,727	14,640
4 Vegetables	233,910	298,554	21,526	15,559	39,516	34,329	47,444	47,303	31,768
5 Leguminous Vegetables	-	-	-	-	-	-	-	-	-
6 Tobacco	24,218	35,787	2,793	852	7,416	1,015	1,096	2,466	3,064
7 Wheat	153,246	11,442	-	-	-	-	-	-	-
8 Spices	88,544	88,285	10,000	6,957	10,105	11,330	9,260	8,472	6,513
9 Oil seeds, Nuts and Kernals	74,360	30,114	731	833	14,119	8,482	14,976	16,295	8,323
10 Sugar	222,857	70,657	-	-	-	-	-	-	-
11 Meat & Meat preparations	242,667	304,174	22,201	24,609	27,886	27,327	26,147	32,075	33,565
12 All other Food Items	643,769	508,275	37,183	30,601	48,794	46,411	47,914	57,240	51,778
<b>B. Textile Group</b>	<b>13,328,243</b>	<b>12,527,093</b>	<b>1,039,687</b>	<b>403,833</b>	<b>1,400,997</b>	<b>1,323,455</b>	<b>1,234,040</b>	<b>1,355,542</b>	<b>1,337,385</b>
13 Raw Cotton	20,395	17,002	205	-	70	-	-	-	-
14 Cotton Yarn	1,125,419	984,900	82,392	38,772	96,180	85,695	120,261	114,526	102,733
15 Cotton Cloth	2,101,814	1,829,901	169,164	54,048	161,839	151,324	148,968	183,880	162,382
16 Cotton Carded or Combed	252	62	-	-	-	-	-	64	-
17 Yarn Other than Cotton Yarn	33,837	25,744	2,059	1,113	2,916	3,578	3,291	3,228	3,436
18 Knitwear	2,899,877	2,794,524	209,761	92,275	342,076	325,426	291,987	313,887	345,199
19 Bed Wear	2,261,824	2,150,832	163,786	76,795	256,007	219,328	203,372	235,377	239,520
20 Towels	786,119	711,304	67,322	18,326	82,998	87,508	77,479	81,425	84,598
21 Tent, Canvas & Tarpaulin	82,419	98,471	10,512	6,340	12,238	11,418	8,336	6,929	6,565
22 Readymade Garments	2,653,719	2,552,587	209,047	61,398	284,702	283,030	238,456	256,735	243,642
23 Art, Silk & Synthetic Textile	297,087	314,771	29,655	11,750	33,456	33,188	29,158	39,356	32,441
24 Made up Articles (Ex towels & bed)	679,970	590,517	52,906	21,039	72,091	67,690	59,112	59,692	61,799
25 Other Textile Materials	385,511	456,478	42,878	21,977	56,424	55,270	53,620	60,443	55,070
<b>C. Petroleum Group &amp; Coal</b>	<b>477,136</b>	<b>273,228</b>	<b>24,930</b>	<b>10,824</b>	<b>19,959</b>	<b>3,139</b>	<b>19,743</b>	<b>549</b>	<b>29,416</b>
26 Petroleum Crude	285,435	185,887	19,916	10,728	15,523	-	19,035	-	21,283
27 Petroleum Products (Exl. Naphtha)	127,843	40,740	1,621	96	2,412	2,148	475	549	7,774
28 Petroleum Top Naphtha	63,810	46,476	3,393	-	2,024	991	233	-	359
29 Solid Fuels (Coal)	48	125	-	-	-	-	-	-	-
<b>D. Other Manufactures Group</b>	<b>3,361,664</b>	<b>3,036,132</b>	<b>272,316</b>	<b>146,602</b>	<b>292,454</b>	<b>260,303</b>	<b>253,940</b>	<b>357,388</b>	<b>291,664</b>
30 Carpets Rugs & Mats	67,197	54,226	4,348	376	6,934	6,262	5,650	6,775	5,592
31 Sports Goods	308,564	262,366	22,514	7,411	21,639	19,709	18,824	23,693	25,797
32 Leather Tanned	252,246	184,157	14,512	10,188	14,884	12,829	12,491	15,892	16,214
33 Leather Manufactures	485,674	474,025	39,154	11,882	52,179	48,169	41,571	45,696	40,077
34 Footwear	122,428	125,938	10,542	4,079	13,216	10,495	12,766	10,900	8,408
35 Surgical Goods & Medical Instr.	388,363	355,617	31,855	12,086	35,622	37,207	34,352	39,441	35,760
36 Cutlery	91,204	82,637	7,285	2,151	9,978	10,871	10,644	10,402	8,381
37 Onyx Manufactured	4,953	4,074	331	64	430	491	568	939	405
38 Chemicals and Pharm.Products	1,136,272	1,008,408	97,493	74,522	90,124	70,621	74,667	147,566	107,065
39 Engineering Goods	172,752	172,663	23,480	7,187	21,674	19,777	17,743	24,622	18,442
40 Gems	3,566	3,595	88	14	1,552	273	1,435	391	281
41 Jewellery	4,911	3,240	217	4	1,518	71	191	521	6,043
42 Furniture	3,713	3,522	470	220	354	267	931	632	888
43 Molasses	12,785	5,291	11	-	-	13	6	8	-
44 Handicrafts	127	-	-	-	-	-	-	-	-
45 Cement	271,728	259,441	16,149	13,130	19,251	20,746	19,525	26,849	15,012
46 Guar and Guar Products	35,181	36,934	3,867	3,288	3,099	2,502	2,576	3,061	3,299
<b>E. All Other Items</b>	<b>1,183,880</b>	<b>1,196,042</b>	<b>110,879</b>	<b>54,498</b>	<b>159,763</b>	<b>145,641</b>	<b>149,186</b>	<b>173,305</b>	<b>173,066</b>
<b>TOTAL</b>	<b>22,958,321</b>	<b>21,393,688</b>	<b>1,810,362</b>	<b>955,226</b>	<b>2,366,177</b>	<b>2,145,021</b>	<b>2,067,684</b>	<b>2,364,452</b>	<b>2,218,611</b>

## 4.17 Imports by Selected Commodities

(a) State Bank of Pakistan

(Thousand US Dollars)

COMMODITIES	FY19	FY20	2020 <sup>P</sup>			2021 <sup>P</sup>			
			Mar	Apr	Dec	Jan	Feb	Mar <sup>R</sup>	Apr
<b>A. Food Group</b>	<b>4,750,632</b>	<b>4,712,506</b>	<b>403,686</b>	<b>421,951</b>	<b>773,925</b>	<b>704,957</b>	<b>675,226</b>	<b>668,130</b>	<b>607,687</b>
1-Milk, Cream & Milk Food for Infants	226,261	169,176	10,079	16,814	14,825	18,204	16,826	24,348	10,856
2-Wheat un-milled	21	-	-	-	134,571	112,191	84,048	94,109	4,785
3-Dry Fruits & Nuts	15,943	15,518	556	898	5,191	6,827	3,176	3,931	2,155
4-Tea	499,919	482,449	38,489	50,239	47,389	47,081	40,553	44,657	42,034
5-Spices	132,159	145,697	11,437	13,881	16,537	15,611	13,107	13,711	16,665
6-Soya bean Oil	105,753	57,732	322	68	-	12	-	15,458	1,057
7-Palm Oil	1,661,903	1,751,612	186,328	160,665	203,427	228,412	227,866	232,023	226,045
8-Sugar	3,580	3,291	177	303	12,060	3,383	1,037	540	463
9-Pulses	378,501	465,818	49,204	50,807	39,400	43,011	39,911	58,743	82,009
10-All others Food items	1,726,593	1,621,213	107,095	128,277	300,526	230,225	248,702	180,610	221,616
<b>B. Machinery Group</b>	<b>6,768,175</b>	<b>6,192,744</b>	<b>451,112</b>	<b>339,160</b>	<b>826,246</b>	<b>717,670</b>	<b>602,384</b>	<b>747,196</b>	<b>754,387</b>
11-Power Generating Machinery	731,737	734,374	31,273	21,619	124,845	66,883	59,143	35,843	68,318
12-Office Mach. Incl. Data Processing	385,586	293,557	23,014	13,168	37,845	28,910	32,686	34,469	27,584
13-Textile Machinery	653,970	587,714	60,656	41,693	72,385	83,099	60,200	86,695	82,723
14-Construction & Mining Machinery	98,123	135,343	22,108	7,756	5,180	8,124	7,044	7,463	6,104
15-Electrical Machinery & Apparatus	1,286,688	1,134,722	80,379	66,128	149,709	125,189	98,192	137,814	148,657
16-Telecom	1,172,381	1,637,385	139,153	93,979	238,117	231,886	183,792	241,971	204,270
17-Agricultural Machinery & Implements	109,014	79,877	4,477	6,827	8,115	12,399	3,758	10,379	8,867
18-Other Machinery	2,330,676	1,589,772	90,052	87,990	190,050	161,179	157,568	192,563	207,863
<b>C. Transport Group</b>	<b>2,315,147</b>	<b>1,512,237</b>	<b>110,948</b>	<b>131,489</b>	<b>266,594</b>	<b>268,233</b>	<b>212,945</b>	<b>365,531</b>	<b>335,115</b>
19-Road Vehicles (Build Unit, Ckd/Skd)	1,934,391	1,276,121	98,220	116,395	187,551	222,177	196,446	296,954	251,310
20-Aircrafts, Ships and Boats	292,395	207,934	11,136	14,119	77,653	45,046	15,723	68,525	80,694
21-Others Transport Equipments	88,362	28,182	1,592	974	1,389	1,010	776	52	3,111
<b>D. Petroleum Group</b>	<b>13,929,441</b>	<b>9,280,094</b>	<b>648,895</b>	<b>722,061</b>	<b>844,870</b>	<b>582,708</b>	<b>858,088</b>	<b>947,381</b>	<b>918,275</b>
22-Petroleum Products	6,038,707	4,189,547	352,136	344,623	303,032	362,013	437,057	400,050	350,330
23-Petroleum Crude	4,914,950	2,606,193	115,375	178,185	345,442	127,632	250,822	309,343	372,312
24-Natural Gas, Liquefied	2,871,909	2,374,721	161,844	184,483	178,122	81,859	158,177	222,365	182,889
25-Petroleum Gas, Liquefied	100,299	109,389	19,533	14,722	18,257	11,204	12,012	12,843	9,327
26- Others	3,576	244	6	48	18	-	20	2,779	3,416
<b>E. Textile Group</b>	<b>3,854,373</b>	<b>3,300,944</b>	<b>354,078</b>	<b>285,258</b>	<b>499,135</b>	<b>513,510</b>	<b>410,632</b>	<b>503,833</b>	<b>445,540</b>
27-Raw Cotton	1,180,565	1,341,941	180,670	156,281	246,049	247,606	175,957	221,113	183,617
28-Synthetic Fibre	640,890	454,825	53,398	35,384	47,762	61,237	57,850	84,203	70,139
29-Synthetic & artificial Silk Yarn	713,238	536,936	45,921	28,130	66,799	60,404	56,700	68,165	69,848
30-Worn Clothing	76,409	74,478	9,157	3,920	11,209	13,016	10,207	8,632	11,400
31-Other Textile Items	1,243,271	892,764	64,932	61,543	127,316	131,247	109,918	121,721	110,537
<b>F. Agricultural &amp; Other Chemical Group</b>	<b>8,394,064</b>	<b>7,031,923</b>	<b>571,805</b>	<b>540,581</b>	<b>674,286</b>	<b>678,115</b>	<b>628,946</b>	<b>820,604</b>	<b>818,664</b>
32-Fertilizer Manufactured	772,214	522,665	44,981	5,347	45,001	28,777	11,990	73,223	19,063
33-Insecticides	185,557	152,282	7,378	20,657	14,087	8,685	11,230	16,221	15,081
34-Plastic Material	2,273,350	1,941,355	173,163	162,858	195,829	214,253	202,757	257,007	259,909
35-Medicinal Products	684,675	685,264	55,837	53,396	59,886	53,048	65,283	76,843	69,507
36-Others	4,478,268	3,730,357	290,447	298,322	359,484	373,352	337,686	397,309	455,104
<b>G. Metal Group</b>	<b>3,907,333</b>	<b>3,228,338</b>	<b>268,571</b>	<b>299,120</b>	<b>394,648</b>	<b>386,996</b>	<b>441,245</b>	<b>450,852</b>	<b>429,961</b>
37-Gold	-	-	-	-	-	-	-	-	-
38-Iron and Steel Scrap	1,155,214	1,185,104	87,291	91,047	152,035	144,202	150,646	152,270	115,458
39-Iron and Steel	2,008,449	1,490,970	144,063	159,444	183,197	178,619	221,921	223,162	228,387
40-Aluminum Wrought & Worked	270,523	223,030	14,951	18,923	18,670	18,407	20,196	25,386	24,297
41-All other Metals & Articles	473,146	329,234	22,265	29,707	40,745	45,768	48,482	50,035	61,819
<b>H. Miscellaneous Group</b>	<b>1,030,353</b>	<b>789,095</b>	<b>65,251</b>	<b>61,417</b>	<b>108,175</b>	<b>103,612</b>	<b>95,676</b>	<b>108,238</b>	<b>100,230</b>
42-Rubber Crude Incl. Synth/Reclaimed	133,290	130,490	11,486	7,224	15,521	17,536	20,568	21,182	17,486
43-Rubber Tyres & Tubes	124,308	78,302	5,718	7,363	29,696	24,664	20,451	21,669	22,892
44-Wood & Cork	189,233	151,702	12,413	12,986	14,498	14,471	11,494	15,533	15,393
45-Jute	33,967	30,274	3,165	1,125	5,785	4,830	5,495	5,020	4,261
46-Paper & Paper Board & Manuf. thereof	549,555	398,327	32,469	32,719	42,675	42,111	37,669	44,834	40,197
<b>I. All Others</b>	<b>5,343,557</b>	<b>4,962,128</b>	<b>254,980</b>	<b>277,863</b>	<b>469,242</b>	<b>346,426</b>	<b>517,426</b>	<b>512,962</b>	<b>446,941</b>
<b>Import Payments (Banks)</b>	<b>50,293,076</b>	<b>41,010,008</b>	<b>3,129,325</b>	<b>3,078,899</b>	<b>4,857,122</b>	<b>4,302,226</b>	<b>4,442,568</b>	<b>5,124,728</b>	<b>4,856,798</b>
<b>J. Other Imports</b>	<b>2,933,854</b>	<b>3,742,361</b>	<b>265,142</b>	<b>148,263</b>	<b>288,998</b>	<b>246,942</b>	<b>178,332</b>	<b>218,636</b>	<b>243,339</b>
<b>K. Less: Freight &amp; Insurance</b>	<b>1,357,913</b>	<b>1,107,270</b>	<b>84,492</b>	<b>83,130</b>	<b>131,142</b>	<b>116,160</b>	<b>119,949</b>	<b>138,368</b>	<b>131,134</b>
<b>Total Import BOP</b>	<b>51,869,017</b>	<b>43,645,100</b>	<b>3,309,975</b>	<b>3,144,032</b>	<b>5,014,977</b>	<b>4,433,008</b>	<b>4,500,951</b>	<b>5,204,996</b>	<b>4,969,003</b>

Note: I. Other Imports includes land borne Import, Import of samples, Import processing zone, outstanding Import bills and refund & rebate, repairs on goods, goods procured on ports by carriers.

Archive Link: [http://www.sbp.org.pk/ecodata/Imports-\(BOP\)-Commodities.xls](http://www.sbp.org.pk/ecodata/Imports-(BOP)-Commodities.xls)

## 4.17 Imports by Selected Commodities

(b) Pakistan Bureau of Statistics

(Thousand US Dollars)

COMMODITIES	FY19	FY20	2020			2021			
			Mar	Apr	Dec	Jan	Feb	Mar	Apr <sup>P</sup>
<b>A. Food Group</b>	<b>5,668,017</b>	<b>5,423,938</b>	<b>406,893</b>	<b>518,765</b>	<b>885,967</b>	<b>734,953</b>	<b>704,828</b>	<b>776,549</b>	<b>777,969</b>
1-Milk, Cream & Milk Food for Infants	230,187	162,930	9,768	17,595	23,063	15,956	17,700	20,984	12,993
2-Wheat un-milled	-	-	-	-	253,610	133,449	121,310	67,421	-
3-Dry Fruits & Nuts	43,033	34,245	1,183	1,329	13,109	10,720	5,081	4,905	4,116
4-Tea	571,691	532,779	51,874	53,150	52,276	50,235	43,172	55,782	52,882
5-Spices	162,489	173,803	14,041	17,321	19,681	22,775	18,659	19,235	24,406
6-Soya bean Oil	107,388	57,548	327	696	4	12	-	-	14,071
7-Palm Oil	1,844,595	1,841,527	197,346	189,784	235,846	255,969	217,551	275,549	281,264
8-Sugar	3,921	3,823	198	557	11,776	170	226	477	464
9-Pulses	505,959	614,579	53,854	62,879	62,389	42,546	47,648	70,632	95,534
10-All others Food items	2,198,754	2,002,704	78,302	175,454	214,213	203,121	233,481	261,564	292,239
<b>B. Machinery Group</b>	<b>8,921,721</b>	<b>8,787,151</b>	<b>625,500</b>	<b>490,440</b>	<b>867,646</b>	<b>920,261</b>	<b>923,443</b>	<b>1,048,632</b>	<b>793,767</b>
11-Power Generating Machinery	1,262,633	1,372,927	57,364	50,038	152,608	191,270	198,616	145,542	82,024
12-Office Mach. Incl. Data Processing	432,064	376,438	29,533	24,048	47,429	33,585	37,359	49,265	43,671
13-Textile Machinery	537,989	437,426	34,249	29,884	48,152	53,178	39,265	54,153	55,724
14-Construction & Mining Machinery	211,571	192,278	26,064	7,230	6,915	10,327	12,415	27,569	9,401
15-Electrical Machinery & Apparatus	1,777,613	2,251,260	198,897	168,228	126,091	151,772	128,060	181,763	176,931
16-Telecom	1,379,566	1,861,105	170,273	91,159	258,865	227,083	237,257	303,568	193,139
17-Agricultural Machinery & Implements	135,336	93,796	6,752	6,481	8,383	8,250	7,881	5,721	7,539
18-Other Machinery	3,184,949	2,201,921	102,368	113,372	219,203	244,796	262,590	281,051	225,338
<b>C. Transport Group</b>	<b>3,085,869</b>	<b>1,545,940</b>	<b>113,444</b>	<b>121,247</b>	<b>284,211</b>	<b>275,417</b>	<b>288,339</b>	<b>313,743</b>	<b>322,641</b>
19-Road Motor Veh. (Build Unit, Ckd/Skd)	2,306,280	1,279,051	104,577	117,644	225,571	211,100	238,107	308,817	307,525
20-Aircrafts Ships and Boats	694,024	250,968	8,488	2,695	58,550	61,948	50,130	4,663	14,855
21-Others Transport Equipments	85,565	15,921	379	908	90	2,369	102	263	261
<b>D. Petroleum Group</b>	<b>14,441,421</b>	<b>10,411,546</b>	<b>668,326</b>	<b>580,332</b>	<b>824,862</b>	<b>869,288</b>	<b>804,850</b>	<b>1,108,315</b>	<b>1,143,908</b>
22-Petroleum Products	6,283,876	4,732,798	323,546	343,644	352,947	380,998	337,321	560,653	418,123
23-Petroleum Crude	4,570,573	2,722,025	136,997	58,305	237,704	219,454	211,517	269,445	384,055
24-Natural Gas, Liquefied	3,336,533	2,662,206	177,979	151,400	181,278	223,120	224,551	231,725	294,734
25. Petroleum Gas, Liquefied	250,183	294,288	29,800	26,954	52,918	45,710	31,435	46,467	46,963
26. Others	256	227	4	29	15	6	26	25	33
<b>E. Textile Group</b>	<b>3,221,417</b>	<b>2,529,442</b>	<b>283,842</b>	<b>232,657</b>	<b>395,601</b>	<b>389,073</b>	<b>345,493</b>	<b>386,823</b>	<b>363,361</b>
27-Raw Cotton	767,500	880,111	166,516	117,698	155,115	183,064	155,108	161,854	154,988
28-Synthetic Fibre	585,368	427,399	38,673	39,561	47,562	41,522	53,531	63,354	61,544
29-Synthetic & artificial Silk Yarn	689,668	503,573	40,692	26,401	65,075	61,248	52,640	65,534	66,764
30-Worn Clothing	181,042	168,765	12,804	12,397	34,676	29,198	24,872	29,557	28,548
31-Other Textile Items	997,839	549,595	25,157	36,600	93,173	74,041	59,342	66,524	51,517
<b>F. Agricultural &amp; Other Chemical Group</b>	<b>8,754,600</b>	<b>7,353,685</b>	<b>553,393</b>	<b>619,886</b>	<b>799,331</b>	<b>676,676</b>	<b>713,331</b>	<b>906,793</b>	<b>915,148</b>
32-Fertilizer Manufactured	798,663	568,868	31,493	31,408	56,164	34,542	5,651	74,466	17,782
33-Insecticides	189,551	185,603	11,908	22,035	13,643	7,561	11,281	23,978	22,263
34-Plastic Material	2,221,023	1,907,337	164,191	145,404	221,222	222,741	199,843	229,437	265,991
35-Medicinal Products	1,093,367	997,427	78,891	74,326	99,863	75,591	104,372	115,822	155,954
36-Others	4,451,996	3,694,450	266,910	346,713	408,439	336,241	392,184	463,090	453,158
<b>G. Metal Group</b>	<b>4,973,833</b>	<b>4,057,552</b>	<b>306,189</b>	<b>303,013</b>	<b>396,124</b>	<b>435,808</b>	<b>391,125</b>	<b>503,396</b>	<b>421,528</b>
37-Gold	13,190	11,627	269	168	491	351	581	637	980
38-Iron and Steel Scrap	1,461,023	1,521,957	102,822	105,210	167,484	161,278	148,994	159,547	159,358
39-Iron and Steel	2,229,227	1,537,973	146,252	96,910	134,688	178,084	146,519	244,655	169,451
40-Aluminum Wrought & Worked	193,864	143,123	11,319	13,302	15,514	15,641	13,005	17,901	16,528
41-All other Metals & Articles	1,076,529	842,872	45,527	87,423	77,947	80,454	82,026	80,656	75,211
<b>H. Miscellaneous Group</b>	<b>1,024,502</b>	<b>809,291</b>	<b>60,950</b>	<b>60,928</b>	<b>124,028</b>	<b>105,555</b>	<b>100,182</b>	<b>110,864</b>	<b>99,009</b>
42-Rubber Crude Incl. Synth/Reclaimed	171,977	159,199	12,798	9,554	24,245	22,082	22,861	23,506	19,441
43-Rubber Tyres & Tubes	139,417	107,962	5,127	8,926	35,019	29,737	24,514	27,229	27,960
44-Wood & Cork	142,058	118,731	10,760	11,612	11,899	8,962	8,786	10,430	10,093
45-Jute	35,364	30,790	4,523	2,402	7,441	4,223	5,396	8,363	3,541
46-Paper & Paper Board & Manuf. thereof	535,686	392,609	27,742	28,434	45,424	40,551	38,625	41,336	37,974
<b>I. All other Items</b>	<b>4,671,603</b>	<b>3,634,347</b>	<b>289,018</b>	<b>274,241</b>	<b>408,673</b>	<b>396,077</b>	<b>329,477</b>	<b>475,870</b>	<b>422,641</b>
<b>TOTAL</b>	<b>54,762,983</b>	<b>44,552,898</b>	<b>3,307,560</b>	<b>3,201,509</b>	<b>4,986,443</b>	<b>4,803,108</b>	<b>4,601,068</b>	<b>5,630,985</b>	<b>5,259,972</b>



## 4.18 Exports by Selected Countries/Territories

(a) State Bank of Pakistan

(Thousand US Dollars)

Country / Territory	FY19	FY20	2020 <sup>P</sup>			2021 <sup>P</sup>			
			Mar	Apr	Dec	Jan	Feb	Mar <sup>R</sup>	Apr
<b>Grand Total</b>	<b>24,256,973</b>	<b>22,536,060</b>	<b>1,821,021</b>	<b>1,423,048</b>	<b>2,253,005</b>	<b>2,096,951</b>	<b>2,175,957</b>	<b>2,610,005</b>	<b>2,294,996</b>
<b>A. Latin America</b>	<b>43,919</b>	<b>46,742</b>	<b>4,551</b>	<b>3,603</b>	<b>3,218</b>	<b>2,597</b>	<b>2,537</b>	<b>2,599</b>	<b>3,481</b>
<b>B. Central America</b>	<b>141,299</b>	<b>111,389</b>	<b>8,053</b>	<b>6,484</b>	<b>7,917</b>	<b>7,361</b>	<b>9,622</b>	<b>10,777</b>	<b>9,045</b>
Mexico	96,595	81,418	6,427	5,255	5,761	5,637	6,213	6,838	6,725
Others	44,704	29,971	1,627	1,229	2,156	1,724	3,408	3,939	2,320
<b>C. South America</b>	<b>258,618</b>	<b>219,854</b>	<b>17,175</b>	<b>13,935</b>	<b>21,053</b>	<b>18,433</b>	<b>18,818</b>	<b>27,292</b>	<b>24,542</b>
Argentina	35,386	32,694	2,209	2,245	2,201	2,608	1,691	2,979	3,200
Brazil	61,609	65,251	5,468	4,930	7,523	4,970	6,654	6,577	8,374
Uruguay	6,699	4,374	213	97	812	510	389	673	394
Others	154,923	117,535	9,286	6,664	10,517	10,345	10,084	17,063	12,574
<b>D. North America</b>	<b>4,329,344</b>	<b>4,186,859</b>	<b>364,644</b>	<b>284,886</b>	<b>450,362</b>	<b>423,686</b>	<b>428,152</b>	<b>519,797</b>	<b>481,871</b>
Canada	285,089	270,138	22,057	20,359	28,726	23,661	25,800	35,336	25,748
USA	4,042,701	3,915,226	342,563	264,273	421,516	399,931	402,167	484,407	455,988
Others	1,555	1,495	25	254	120	93	186	53	135
<b>E. Eastern Europe</b>	<b>567,821</b>	<b>572,355</b>	<b>59,032</b>	<b>43,298</b>	<b>63,098</b>	<b>59,217</b>	<b>66,458</b>	<b>82,461</b>	<b>64,682</b>
Hungary	16,087	13,315	997	718	1,968	1,234	2,316	2,429	3,423
Romania	25,413	25,579	2,063	1,935	3,391	3,244	3,190	3,989	3,129
Russian Federation	151,110	130,093	18,567	12,469	15,029	15,276	18,693	27,920	15,551
Ukraine	43,910	52,627	4,755	3,198	5,339	4,926	6,701	7,435	5,339
Others	331,302	350,741	32,649	24,978	37,371	34,536	35,558	40,688	37,240
<b>F. Northern Europe</b>	<b>2,314,505</b>	<b>2,182,861</b>	<b>189,576</b>	<b>144,468</b>	<b>244,786</b>	<b>231,568</b>	<b>227,898</b>	<b>255,734</b>	<b>237,299</b>
Denmark	187,291	196,566	16,398	14,928	22,983	22,039	21,016	21,916	21,790
Finland	24,315	28,249	2,410	1,405	2,854	2,059	2,172	2,549	3,322
Norway	58,993	55,486	4,875	4,328	4,350	4,163	3,716	5,041	4,316
Sweden	147,375	128,586	14,826	8,650	19,584	16,216	16,501	15,870	13,573
United Kingdom	1,758,050	1,638,544	138,069	105,926	182,653	178,794	173,368	198,659	183,970
Others	138,481	135,430	12,997	9,232	12,361	8,297	11,125	11,699	10,327
<b>G. Southern Europe</b>	<b>2,096,956</b>	<b>1,964,813</b>	<b>177,348</b>	<b>146,392</b>	<b>170,847</b>	<b>171,034</b>	<b>173,507</b>	<b>188,339</b>	<b>179,191</b>
Greece	86,969	72,090	6,852	5,374	5,837	5,577	6,152	8,035	6,865
Italy	805,399	751,921	66,696	50,552	67,172	59,711	68,825	74,793	71,293
Spain	929,421	870,920	78,236	66,385	72,557	76,527	73,335	82,614	73,516
Others	275,168	269,882	25,564	24,081	25,282	29,219	25,194	22,897	27,518
<b>H. Western Europe</b>	<b>3,426,202</b>	<b>3,344,183</b>	<b>309,426</b>	<b>226,618</b>	<b>333,674</b>	<b>322,846</b>	<b>302,662</b>	<b>379,543</b>	<b>296,503</b>
Belgium	609,488	516,977	47,386	35,300	47,656	47,373	48,184	59,957	51,435
France	443,532	422,144	33,490	30,777	38,712	43,007	32,051	43,318	30,764
Germany	1,307,459	1,302,991	124,912	80,273	133,250	124,448	116,545	143,251	112,084
Netherlands	948,911	982,263	88,622	73,718	104,907	101,823	97,430	115,123	92,335
Switzerland	94,813	97,563	12,992	5,164	7,153	4,758	5,841	16,234	8,175
Others	21,999	22,245	2,024	1,386	1,996	1,437	2,612	1,659	1,710
<b>I. Eastern Africa</b>	<b>612,416</b>	<b>659,858</b>	<b>68,615</b>	<b>56,071</b>	<b>42,687</b>	<b>40,380</b>	<b>40,391</b>	<b>42,346</b>	<b>39,333</b>
Kenya	221,384	246,405	22,041	22,771	16,153	13,882	12,426	13,428	12,997
Mauritius	25,673	29,612	2,241	2,470	1,550	1,362	1,706	1,232	1,763
United Republic of Tanzania	78,635	68,570	8,228	5,674	4,723	3,903	4,244	5,380	3,210
Others	286,724	315,271	36,106	25,155	20,262	21,234	22,014	22,307	21,363

## 4.18 Exports by Selected Countries/Territories

(a) State Bank of Pakistan

(Thousand US Dollars)

Country / Territory	FY19	FY20	2020 <sup>P</sup>			2021 <sup>P</sup>			
			Mar	Apr	Dec	Jan	Feb	Mar <sup>R</sup>	Apr
<b>J. Middle Africa</b>	<b>27,469</b>	<b>32,524</b>	<b>3,013</b>	<b>2,847</b>	<b>3,811</b>	<b>3,808</b>	<b>4,733</b>	<b>4,916</b>	<b>2,655</b>
<b>K. Northern Africa</b>	<b>168,881</b>	<b>159,148</b>	<b>15,206</b>	<b>10,700</b>	<b>11,947</b>	<b>10,245</b>	<b>12,851</b>	<b>14,311</b>	<b>20,058</b>
Egypt	95,568	87,707	10,010	6,513	6,486	4,262	7,802	7,752	15,726
Morocco	25,216	24,172	2,279	1,600	1,996	2,955	2,325	2,614	1,551
Others	48,097	47,268	2,918	2,587	3,465	3,028	2,724	3,946	2,780
<b>L. Southern Africa</b>	<b>168,415</b>	<b>174,943</b>	<b>15,131</b>	<b>7,482</b>	<b>14,889</b>	<b>13,884</b>	<b>16,811</b>	<b>15,538</b>	<b>20,512</b>
South Africa	155,376	160,664	13,911	5,582	14,411	13,289	16,123	14,607	19,469
Others	13,039	14,279	1,220	1,900	478	595	688	930	1,043
<b>M. Western Africa</b>	<b>307,337</b>	<b>357,827</b>	<b>17,895</b>	<b>21,098</b>	<b>20,239</b>	<b>28,996</b>	<b>15,306</b>	<b>25,646</b>	<b>60,219</b>
<b>N. Eastern Asia</b>	<b>2,561,853</b>	<b>2,264,130</b>	<b>170,962</b>	<b>153,280</b>	<b>271,888</b>	<b>247,949</b>	<b>186,660</b>	<b>322,306</b>	<b>288,600</b>
China	1,858,878	1,663,962	118,955	112,473	222,178	189,048	138,931	239,598	235,137
Hong Kong	171,961	217,850	17,171	9,264	21,002	17,320	17,802	22,028	22,001
Japan	216,846	186,493	18,276	15,644	14,798	13,942	10,643	15,742	14,695
Republic of Korea	299,654	185,067	16,394	15,355	13,759	12,786	13,397	14,950	16,681
Others	14,513	10,758	165	544	152	14,853	5,887	29,988	86
<b>O. South-Central Asia</b>	<b>2,675,233</b>	<b>2,057,538</b>	<b>162,689</b>	<b>68,045</b>	<b>167,277</b>	<b>177,458</b>	<b>179,300</b>	<b>216,162</b>	<b>186,347</b>
Afghanistan	1,192,559	890,052	61,121	19,308	82,507	93,341	85,674	116,541	82,399
Bangladesh	744,720	695,102	61,653	25,620	54,433	48,983	52,440	62,857	58,870
India	311,958	28,644	3,429	1,825	41	88	117	112	55
Iran	2,942	55	-	-	155	106	-	-	-
Sri Lanka	303,761	289,120	25,275	17,350	22,544	26,707	27,228	29,631	27,911
Others	119,294	154,565	11,211	3,941	7,596	8,233	13,841	7,022	17,111
<b>P. South Eastern Asia</b>	<b>1,325,030</b>	<b>923,407</b>	<b>69,132</b>	<b>69,969</b>	<b>76,970</b>	<b>79,063</b>	<b>88,599</b>	<b>102,535</b>	<b>103,886</b>
Indonesia	243,259	95,866	7,530	9,997	16,590	16,713	8,854	15,644	12,529
Malaysia	161,382	231,515	20,792	21,325	13,739	21,009	21,194	23,372	33,512
Singapore	264,831	178,556	8,258	7,454	11,498	13,278	28,042	19,116	12,137
Thailand	223,695	168,361	13,728	9,156	11,699	7,580	11,685	16,503	17,107
Others	431,863	249,109	18,823	22,037	23,444	20,484	18,825	27,900	28,601
<b>Q. Western Asia</b>	<b>2,626,429</b>	<b>2,979,194</b>	<b>266,239</b>	<b>240,400</b>	<b>279,240</b>	<b>229,562</b>	<b>246,754</b>	<b>268,849</b>	<b>253,218</b>
Bahrain	64,956	69,979	5,487	6,865	5,064	4,145	3,604	5,640	4,346
Jordan	33,432	34,240	4,497	2,455	3,128	2,427	2,247	2,838	2,426
Kuwait	109,787	112,851	9,648	11,414	13,393	11,195	10,896	15,517	11,640
Saudi Arabia	330,156	454,420	34,667	35,990	68,130	31,877	50,559	38,573	36,402
Turkey	300,054	283,923	27,230	22,534	24,886	23,212	21,936	22,576	25,847
United Arab Emirates	1,382,792	1,588,328	144,344	130,910	131,821	126,388	120,945	141,262	130,101
Others	405,251	435,453	40,366	30,232	32,818	30,318	36,566	42,444	42,456
<b>R. Australia &amp; New Zealand</b>	<b>300,846</b>	<b>254,294</b>	<b>22,562</b>	<b>20,843</b>	<b>28,444</b>	<b>25,282</b>	<b>29,987</b>	<b>31,558</b>	<b>43,186</b>
Australia	232,348	205,029	18,409	17,272	24,043	20,249	24,878	26,564	25,572
New Zealand	40,167	43,148	3,960	3,246	4,015	4,453	4,786	4,681	4,847
Others	28,331	6,118	193	325	386	581	323	313	12,767
<b>S. Others</b>	<b>77,190</b>	<b>48,880</b>	<b>3,418</b>	<b>3,033</b>	<b>4,087</b>	<b>4,436</b>	<b>5,599</b>	<b>5,423</b>	<b>5,813</b>
<b>Export Receipts (Banks)</b>	<b>24,029,764</b>	<b>22,540,800</b>	<b>1,944,666</b>	<b>1,523,450</b>	<b>2,216,434</b>	<b>2,097,804</b>	<b>2,056,645</b>	<b>2,516,133</b>	<b>2,320,441</b>
<b>T Other Exports</b>	<b>418,295</b>	<b>211,941</b>	<b>(109,807)</b>	<b>(88,517)</b>	<b>53,109</b>	<b>15,686</b>	<b>133,086</b>	<b>107,646</b>	<b>(11,670)</b>
<b>U Less: Freight and insurance</b>	<b>191,085</b>	<b>216,682</b>	<b>13,838</b>	<b>11,884</b>	<b>16,539</b>	<b>16,539</b>	<b>13,774</b>	<b>13,774</b>	<b>13,774</b>

## 4.18 Exports by Selected Countries/Territories

(b) Pakistan Bureau of Statistics

(Thousand US Dollars)

Country / Territory	FY19	FY20	2020				2021		
			Feb	Mar	Nov	Dec	Jan	Feb	Mar
<b>Grand Total</b>	<b>22,958,321</b>	<b>21,393,688</b>	<b>2,136,525</b>	<b>1,810,362</b>	<b>2,170,936</b>	<b>2,366,177</b>	<b>2,145,021</b>	<b>2,067,684</b>	<b>2,364,452</b>
<b>A. Latin America</b>	<b>21,973</b>	<b>34,317</b>	<b>4,682</b>	<b>6,087</b>	<b>1,312</b>	<b>2,373</b>	<b>1,791</b>	<b>4,319</b>	<b>1,589</b>
<b>B. Central America</b>	<b>133,100</b>	<b>107,802</b>	<b>10,166</b>	<b>9,242</b>	<b>9,565</b>	<b>9,723</b>	<b>9,374</b>	<b>9,344</b>	<b>11,352</b>
Mexico	97,082	80,830	7,156	6,333	7,580	6,803	6,827	6,101	7,808
Others	36,018	26,972	3,011	2,909	1,985	2,920	2,547	3,243	3,543
<b>C. South America</b>	<b>252,753</b>	<b>223,347</b>	<b>22,829</b>	<b>21,414</b>	<b>22,070</b>	<b>25,121</b>	<b>25,085</b>	<b>24,312</b>	<b>29,014</b>
Argentina	27,410	32,389	3,406	3,493	3,146	3,671	4,030	2,339	3,369
Brazil	65,415	67,945	6,677	7,120	7,065	7,693	7,295	8,559	8,584
Uruguay	7,644	4,941	246	194	322	473	919	284	330
Others	152,284	118,072	12,500	10,607	11,536	13,284	12,840	13,130	16,732
<b>D. North America</b>	<b>4,181,736</b>	<b>3,987,399</b>	<b>367,786</b>	<b>347,428</b>	<b>453,771</b>	<b>455,697</b>	<b>486,475</b>	<b>406,421</b>	<b>441,045</b>
Canada	270,764	272,910	24,619	26,782	25,863	30,453	29,995	24,774	27,333
USA	3,910,878	3,714,428	343,166	320,643	427,905	425,234	456,476	381,629	413,709
Others	95	61	1	3	3	11	4	17	4
<b>E. Eastern Europe</b>	<b>569,321</b>	<b>552,405</b>	<b>73,164</b>	<b>42,069</b>	<b>58,337</b>	<b>86,891</b>	<b>72,287</b>	<b>71,605</b>	<b>62,369</b>
Hungary	11,487	10,257	737	695	1,080	1,364	1,138	1,097	1,921
Romania	25,648	27,637	2,442	2,717	4,088	3,666	3,424	2,489	4,258
Russian Federation	152,940	129,516	24,380	7,789	10,358	32,016	25,530	24,559	17,367
Ukraine	48,125	53,700	8,247	4,285	5,561	6,685	6,176	5,922	7,269
Others	331,121	331,294	37,357	26,583	37,250	43,160	36,018	37,538	31,555
<b>F. Northern Europe</b>	<b>2,216,436</b>	<b>2,048,722</b>	<b>210,495</b>	<b>161,684</b>	<b>224,464</b>	<b>248,891</b>	<b>215,004</b>	<b>204,218</b>	<b>222,936</b>
Denmark	181,807	185,016	21,356	14,778	20,903	23,509	26,446	20,501	19,616
Finland	28,501	27,991	2,037	2,136	2,442	3,927	1,961	2,391	2,959
Norway	57,146	57,273	5,640	4,882	3,773	5,934	4,817	3,973	5,255
Sweden	134,979	121,898	13,195	10,295	14,292	14,378	14,968	12,111	13,855
United Kingdom	1,668,816	1,521,218	156,127	121,304	171,984	189,702	156,295	157,215	169,735
Others	145,187	135,327	12,141	8,289	11,070	11,440	10,518	8,028	11,516
<b>G. Southern Europe</b>	<b>2,087,583</b>	<b>1,905,642</b>	<b>181,315</b>	<b>168,869</b>	<b>180,899</b>	<b>187,985</b>	<b>171,415</b>	<b>158,826</b>	<b>204,585</b>
Greece	88,683	74,781	9,294	8,049	5,918	6,082	5,925	6,369	10,058
Italy	785,651	730,185	70,860	65,308	66,771	66,993	61,257	61,596	88,620
Spain	930,064	828,256	75,634	70,124	83,025	86,475	78,570	64,147	79,934
Others	283,185	272,419	25,528	25,389	25,184	28,435	25,663	26,714	25,972
<b>H. Western Europe</b>	<b>3,290,607</b>	<b>3,227,121</b>	<b>340,649</b>	<b>250,777</b>	<b>307,956</b>	<b>379,581</b>	<b>311,908</b>	<b>291,243</b>	<b>330,742</b>
Belgium	624,320	552,856	72,163	43,052	45,688	56,059	52,124	49,806	57,800
France	396,773	366,175	26,414	26,026	36,920	40,362	30,901	32,520	32,822
Germany	1,272,110	1,264,009	134,141	101,015	128,720	158,302	122,479	112,555	127,913
Netherlands	970,021	1,019,242	105,665	78,720	94,779	123,164	104,052	94,234	109,956
Switzerland	13,193	12,827	1,079	948	1,111	1,028	809	852	1,199
Others	14,191	12,012	1,186	1,016	738	666	1,544	1,276	1,052
<b>I. Eastern Africa</b>	<b>683,027</b>	<b>767,532</b>	<b>77,057</b>	<b>79,769</b>	<b>63,496</b>	<b>58,104</b>	<b>60,714</b>	<b>48,669</b>	<b>71,217</b>
Kenya	262,627	289,419	28,619	29,965	26,356	22,481	28,539	17,219	24,362
Mauritius	16,823	20,032	1,149	1,872	1,274	1,713	665	1,379	826
United Republic of Tanzania	99,606	99,050	12,381	11,815	9,942	8,527	7,871	8,537	6,431
Others	303,971	359,031	34,908	36,117	25,924	25,383	23,638	21,534	39,598

## 4.18 Exports by Selected Countries/Territories

(b) Pakistan Bureau of Statistics

(Thousand US Dollars)

Country / Territory	FY19	FY20	2020				2021		
			Feb	Mar	Nov	Dec	Jan	Feb	Mar
<b>J. Middle Africa</b>	<b>36,644</b>	<b>49,802</b>	<b>7,908</b>	<b>4,199</b>	<b>4,053</b>	<b>5,487</b>	<b>5,170</b>	<b>8,006</b>	<b>6,912</b>
<b>K. Northern Africa</b>	<b>172,624</b>	<b>162,287</b>	<b>16,016</b>	<b>16,256</b>	<b>12,242</b>	<b>17,141</b>	<b>14,553</b>	<b>16,188</b>	<b>21,844</b>
Egypt	90,013	80,662	7,847	9,131	6,441	7,126	7,809	9,003	9,590
Morocco	23,861	23,901	3,368	3,061	2,035	3,278	1,744	2,880	2,603
Others	58,750	57,725	4,800	4,065	3,766	6,737	5,000	4,305	9,651
<b>L. Southern Africa</b>	<b>170,632</b>	<b>186,095</b>	<b>18,092</b>	<b>15,897</b>	<b>15,688</b>	<b>18,242</b>	<b>20,572</b>	<b>14,114</b>	<b>18,382</b>
South Africa	164,483	179,630	17,866	15,360	15,017	17,626	19,945	13,845	18,049
Others	6,149	6,465	226	538	672	616	627	269	332
<b>M. Western Africa</b>	<b>318,287</b>	<b>313,691</b>	<b>29,226</b>	<b>27,872</b>	<b>18,740</b>	<b>33,363</b>	<b>19,632</b>	<b>23,145</b>	<b>30,203</b>
<b>N. Eastern Asia</b>	<b>2,538,698</b>	<b>2,219,578</b>	<b>185,980</b>	<b>172,448</b>	<b>338,981</b>	<b>301,417</b>	<b>244,491</b>	<b>294,846</b>	<b>323,527</b>
China	1,896,497	1,735,119	145,759	131,294	277,463	267,604	198,433	257,974	275,679
Hong Kong	102,482	73,334	5,300	5,375	27,177	5,782	5,311	5,143	6,870
Japan	197,465	171,536	15,078	12,218	15,746	12,826	15,641	15,292	16,190
Republic of Korea	273,412	177,362	13,744	17,857	13,929	10,075	18,828	11,034	18,930
Others	68,842	62,227	6,101	5,704	4,667	5,130	6,278	5,403	5,858
<b>O. South-Central Asia</b>	<b>2,762,884</b>	<b>1,940,628</b>	<b>220,277</b>	<b>142,736</b>	<b>155,264</b>	<b>185,533</b>	<b>173,492</b>	<b>170,161</b>	<b>221,361</b>
Afghanistan	1,292,943	855,038	102,401	43,461	82,500	91,009	78,208	79,622	108,251
Bangladesh	750,706	653,887	70,215	67,631	48,375	49,094	56,340	50,044	66,519
India	264,405	8,044	-	2	7	-	-	5	45
Iran	16,452	4	-	-	-	-	-	-	-
Sri Lanka	317,093	300,746	37,332	23,733	18,185	30,382	25,762	26,655	27,715
Others	121,285	122,909	10,329	7,909	6,197	15,049	13,182	13,835	18,832
<b>P. South Eastern Asia</b>	<b>1,102,094</b>	<b>901,339</b>	<b>90,374</b>	<b>79,857</b>	<b>100,375</b>	<b>99,714</b>	<b>70,120</b>	<b>98,194</b>	<b>108,425</b>
Indonesia	166,299	111,260	10,302	17,218	19,334	26,070	7,356	9,568	23,136
Malaysia	165,595	267,135	23,604	18,474	12,271	23,960	20,885	23,214	23,706
Singapore	91,461	53,913	4,158	3,992	2,604	5,858	4,020	24,071	4,561
Thailand	222,756	180,491	16,036	15,101	14,360	12,241	12,521	15,106	22,108
Others	455,982	288,541	36,274	25,072	51,805	31,585	25,337	26,235	34,913
<b>Q. Western Asia</b>	<b>2,123,922</b>	<b>2,516,470</b>	<b>256,305</b>	<b>241,655</b>	<b>177,465</b>	<b>220,001</b>	<b>208,882</b>	<b>194,154</b>	<b>224,433</b>
Bahrain	62,819	70,170	4,985	6,317	4,429	5,210	4,420	4,281	4,442
Jordan	32,101	38,477	2,701	3,494	1,670	1,775	1,520	2,095	2,338
Kuwait	114,335	104,187	10,240	8,434	11,097	10,256	10,178	9,453	9,406
Saudi Arabia	311,577	443,002	39,568	52,052	36,217	36,074	41,277	38,574	43,618
Turkey	286,538	262,678	27,225	25,023	19,156	24,865	17,929	16,834	27,242
United Arab Emirates	917,539	1,134,724	124,860	102,167	76,172	103,481	83,305	75,564	94,023
Others	399,013	463,233	46,724	44,166	28,724	38,341	50,254	47,353	43,364
<b>R. Australia &amp; New Zealand</b>	<b>263,909</b>	<b>245,361</b>	<b>23,966</b>	<b>21,926</b>	<b>25,983</b>	<b>30,593</b>	<b>33,665</b>	<b>29,671</b>	<b>34,333</b>
Australia	226,369	207,385	20,448	18,517	21,937	26,902	28,421	25,019	28,894
New Zealand	37,541	37,977	3,517	3,409	4,047	3,691	5,244	4,653	5,439
Others	-	-	-	-	-	-	-	-	-
<b>S. Others</b>	<b>32,092</b>	<b>4,151</b>	<b>240</b>	<b>177</b>	<b>273</b>	<b>320</b>	<b>392</b>	<b>252</b>	<b>186</b>

## 4.19 Imports by Selected Countries/Territories

(a) State Bank of Pakistan

(Thousand US Dollars)

Country / Territory	FY19	FY20	2020 <sup>P</sup>			2021 <sup>P</sup>			
			Mar	Apr	Dec	Jan	Feb	Mar <sup>R</sup>	Apr
<b>Grand Total</b>	<b>51,869,017</b>	<b>43,645,100</b>	<b>3,309,975</b>	<b>3,144,032</b>	<b>5,014,977</b>	<b>4,433,008</b>	<b>4,500,951</b>	<b>5,204,996</b>	<b>4,969,003</b>
<b>A. Latin America</b>	<b>42,992</b>	<b>22,488</b>	<b>1,789</b>	<b>634</b>	<b>2,551</b>	<b>1,072</b>	<b>2,193</b>	<b>1,889</b>	<b>2,847</b>
<b>B. Central America</b>	<b>116,295</b>	<b>53,088</b>	<b>6,641</b>	<b>7,516</b>	<b>8,231</b>	<b>2,810</b>	<b>2,668</b>	<b>3,666</b>	<b>7,163</b>
Mexico	52,075	43,984	5,954	6,390	6,777	1,732	1,625	1,993	4,052
Others	64,220	9,104	687	1,126	1,454	1,078	1,043	1,673	3,111
<b>C. South America</b>	<b>384,059</b>	<b>614,974</b>	<b>51,673</b>	<b>45,700</b>	<b>64,770</b>	<b>70,326</b>	<b>25,255</b>	<b>62,095</b>	<b>89,370</b>
Argentina	64,461	68,860	6,653	6,083	6,397	3,629	1,395	7,261	4,531
Brazil	259,981	515,193	39,549	37,717	56,226	65,287	22,522	52,166	83,209
Uruguay	10,104	16,515	3,778	817	714	232	189	1,452	339
Others	49,514	14,405	1,692	1,082	1,433	1,178	1,149	1,217	1,291
<b>D. North America</b>	<b>2,459,575</b>	<b>2,578,783</b>	<b>247,190</b>	<b>215,170</b>	<b>237,614</b>	<b>289,807</b>	<b>317,824</b>	<b>325,435</b>	<b>254,501</b>
Canada	360,837	326,261	33,228	21,172	43,417	53,991	54,763	41,978	40,394
USA	2,097,595	2,251,298	213,792	193,938	194,148	235,810	262,986	283,388	214,107
Others	1,143	1,224	170	60	50	6	74	69	..
<b>E. Eastern Europe</b>	<b>341,977</b>	<b>415,393</b>	<b>25,161</b>	<b>29,548</b>	<b>164,862</b>	<b>151,295</b>	<b>109,415</b>	<b>122,673</b>	<b>43,107</b>
Hungary	8,780	11,693	651	610	897	1,026	476	1,054	252
Romania	30,384	18,083	497	3,157	738	757	523	1,281	1,802
Russian Federation	90,469	218,200	14,016	9,367	140,401	128,526	57,469	60,342	9,849
Ukraine	83,019	47,298	4,337	4,583	12,567	7,283	9,211	12,722	16,068
Others	129,325	120,119	5,660	11,830	10,259	13,702	41,736	47,274	15,136
<b>F. Northern Europe</b>	<b>1,418,282</b>	<b>1,146,831</b>	<b>81,040</b>	<b>91,948</b>	<b>148,265</b>	<b>105,800</b>	<b>101,384</b>	<b>108,876</b>	<b>104,077</b>
Denmark	80,428	80,890	2,857	5,976	8,069	7,011	8,567	6,241	9,063
Finland	56,506	52,155	3,637	4,499	9,662	7,621	4,502	3,630	7,157
Norway	22,799	16,567	1,752	1,018	2,250	1,547	1,942	1,940	1,436
Sweden	322,103	240,925	15,169	14,118	46,064	17,068	21,565	24,291	26,290
United Kingdom	841,244	692,551	51,789	61,268	75,816	67,026	59,952	67,460	54,208
Others	95,202	63,743	5,835	5,070	6,404	5,526	4,855	5,314	5,923
<b>G. Southern Europe</b>	<b>918,902</b>	<b>760,211</b>	<b>50,771</b>	<b>39,368</b>	<b>72,387</b>	<b>84,922</b>	<b>65,887</b>	<b>80,748</b>	<b>68,088</b>
Greece	33,247	26,868	3,061	505	12,256	7,895	1,484	6,789	5,256
Italy	583,501	509,916	34,331	23,786	43,589	46,947	41,462	43,320	40,263
Spain	241,319	189,465	10,953	12,850	13,218	16,014	18,428	24,290	17,959
Others	60,836	33,962	2,426	2,228	3,323	14,067	4,513	6,349	4,610
<b>H. Western Europe</b>	<b>3,485,681</b>	<b>3,039,429</b>	<b>246,364</b>	<b>202,582</b>	<b>376,270</b>	<b>334,491</b>	<b>294,475</b>	<b>324,367</b>	<b>312,641</b>
Belgium	325,314	306,937	26,126	13,869	29,843	32,444	29,457	44,088	38,942
France	401,998	356,109	25,775	12,312	32,501	46,789	34,050	28,028	31,698
Germany	1,089,487	949,280	95,459	57,299	106,251	103,344	90,098	99,936	98,876
Netherlands	584,831	668,013	46,877	47,615	60,032	37,279	34,608	40,964	40,199
Switzerland	925,841	649,016	45,569	62,593	135,140	98,947	91,136	97,661	93,554
Others	158,210	110,075	6,559	8,894	12,502	15,687	15,126	13,690	9,372
<b>I. Eastern Africa</b>	<b>501,295</b>	<b>563,679</b>	<b>49,978</b>	<b>61,511</b>	<b>53,196</b>	<b>59,281</b>	<b>45,763</b>	<b>43,782</b>	<b>50,808</b>
Kenya	436,782	419,210	33,700	45,748	38,757	39,703	35,477	35,053	38,289
Mauritius	3,470	4,530	430	147	444	1,615	275	673	498
United Republic of Tanzania	23,035	82,288	9,476	11,916	9,861	6,080	2,705	3,457	2,489
Others	38,008	57,650	6,372	3,700	4,134	11,882	7,306	4,600	9,533

## 4.19 Imports by Selected Countries/Territories

(a) State Bank of Pakistan

(Thousand US Dollars)

Country / Territory	FY19	FY20	2020 <sup>P</sup>			2021 <sup>P</sup>			
			Mar	Apr	Dec	Jan	Feb	Mar <sup>R</sup>	Apr
<b>J. Middle Africa</b>	<b>106,225</b>	<b>9,407</b>	<b>2,034</b>	<b>1,424</b>	<b>372</b>	<b>530</b>	<b>1,950</b>	<b>1,520</b>	<b>22,698</b>
<b>K. Northern Africa</b>	<b>592,495</b>	<b>680,703</b>	<b>27,890</b>	<b>35,263</b>	<b>88,161</b>	<b>37,035</b>	<b>28,791</b>	<b>73,451</b>	<b>43,246</b>
Egypt	167,273	271,368	7,351	3,533	34,819	10,658	9,541	45,498	10,969
Morocco	391,288	312,471	20,256	4,570	53,160	25,179	18,733	27,368	31,770
Others	33,934	96,864	284	27,160	181	1,199	517	585	507
<b>L. Southern Africa</b>	<b>860,632</b>	<b>825,938</b>	<b>63,351</b>	<b>66,560</b>	<b>112,961</b>	<b>78,898</b>	<b>71,058</b>	<b>94,355</b>	<b>114,996</b>
South Africa	791,679	812,072	63,305	65,090	111,842	77,026	70,630	91,920	112,287
Others	68,953	13,866	47	1,470	1,119	1,872	428	2,435	2,709
<b>M. Western Africa</b>	<b>199,305</b>	<b>260,114</b>	<b>14,738</b>	<b>31,575</b>	<b>10,187</b>	<b>26,387</b>	<b>5,716</b>	<b>7,326</b>	<b>10,828</b>
<b>N. Eastern Asia</b>	<b>13,259,918</b>	<b>12,009,678</b>	<b>850,076</b>	<b>865,103</b>	<b>1,541,026</b>	<b>1,371,829</b>	<b>1,361,204</b>	<b>1,636,226</b>	<b>1,622,216</b>
China	10,164,937	9,568,121	620,128	670,341	1,192,297	1,077,422	1,055,641	1,212,354	1,236,577
Hong Kong	754,128	650,360	50,512	43,067	70,946	40,412	57,714	62,257	58,612
Japan	1,525,693	1,033,610	107,433	79,474	140,791	156,977	134,934	231,353	183,420
Republic of Korea	810,415	752,937	71,499	71,252	136,234	96,093	112,611	130,065	141,694
Others	4,745	4,650	504	968	758	926	304	197	1,913
<b>O. South-Central Asia</b>	<b>1,890,158</b>	<b>626,889</b>	<b>37,832</b>	<b>18,907</b>	<b>67,003</b>	<b>65,496</b>	<b>49,534</b>	<b>41,381</b>	<b>53,035</b>
Afghanistan	170,478	121,832	10,445	4,188	29,852	27,730	14,614	5,381	19,948
Bangladesh	52,199	48,733	4,521	2,378	8,429	8,558	8,656	8,073	6,621
India	1,595,565	373,561	14,743	8,978	15,840	16,011	14,045	13,585	13,975
Iran	..	-	-	-	-	-	-	-	-
Sri Lanka	60,169	70,997	5,652	2,433	7,263	6,833	7,472	8,782	6,950
Others	11,746	11,766	2,470	930	5,619	6,365	4,748	5,560	5,541
<b>P. South Eastern Asia</b>	<b>6,663,567</b>	<b>5,358,793</b>	<b>484,700</b>	<b>487,580</b>	<b>648,340</b>	<b>646,617</b>	<b>587,560</b>	<b>736,761</b>	<b>664,923</b>
Indonesia	1,064,431	1,029,945	105,888	76,857	102,715	95,850	114,680	121,035	122,882
Malaysia	1,017,325	948,428	71,183	91,559	117,131	113,921	85,266	116,481	96,525
Singapore	3,329,248	2,371,885	225,477	238,289	288,836	292,796	258,668	310,673	289,076
Thailand	1,034,698	714,475	53,308	57,033	103,137	111,929	73,032	146,424	111,436
Others	217,865	294,059	28,844	23,842	36,522	32,121	55,914	42,149	45,005
<b>Q. Western Asia</b>	<b>16,295,429</b>	<b>11,494,938</b>	<b>851,400</b>	<b>831,886</b>	<b>1,206,874</b>	<b>923,145</b>	<b>1,313,271</b>	<b>1,384,447</b>	<b>1,280,924</b>
Bahrain	306,215	127,867	26,091	23,736	18,170	31,571	5,048	15,248	9,279
Jordan	19,814	15,387	741	1,334	1,364	929	1,763	1,792	1,478
Kuwait	1,206,909	1,020,313	52,425	120,222	94,006	141,868	128,667	204,522	67,435
Saudi Arabia	2,986,030	1,318,703	64,690	83,913	234,738	156,730	196,704	210,287	322,931
Turkey	486,017	608,263	27,093	30,578	79,392	66,277	198,998	100,228	50,849
United Arab Emirates	8,869,303	6,358,742	478,619	398,138	614,465	455,950	574,562	632,747	639,949
Others	2,421,141	2,045,664	201,741	173,965	164,741	69,819	207,528	219,624	189,003
<b>R. Australia &amp; New Zealand</b>	<b>225,577</b>	<b>258,593</b>	<b>17,602</b>	<b>20,778</b>	<b>33,689</b>	<b>30,897</b>	<b>39,040</b>	<b>49,494</b>	<b>59,428</b>
Australia	175,160	222,677	15,270	18,901	29,757	26,065	35,355	43,220	55,235
New Zealand	45,978	32,287	1,756	1,692	3,550	4,696	3,347	5,784	4,060
Others	4,440	3,629	576	185	383	137	338	490	133
<b>S. Others</b>	<b>530,713</b>	<b>290,081</b>	<b>19,094</b>	<b>25,848</b>	<b>20,361</b>	<b>21,589</b>	<b>19,580</b>	<b>26,234</b>	<b>51,904</b>
<b>Import Payments (Banks)</b>	<b>50,293,076</b>	<b>41,010,008</b>	<b>3,129,325</b>	<b>3,078,899</b>	<b>4,857,122</b>	<b>4,302,226</b>	<b>4,442,568</b>	<b>5,124,728</b>	<b>4,856,798</b>
<b>T. Other Imports</b>	<b>2,933,854</b>	<b>3,742,361</b>	<b>265,142</b>	<b>148,263</b>	<b>288,998</b>	<b>246,942</b>	<b>178,332</b>	<b>218,636</b>	<b>243,339</b>
<b>U. Less: Freight &amp; Insurance</b>	<b>1,357,913</b>	<b>1,107,270</b>	<b>84,492</b>	<b>83,130</b>	<b>131,142</b>	<b>116,160</b>	<b>119,949</b>	<b>138,368</b>	<b>131,134</b>

## 4.19 Imports by Selected Countries/Territories

(b) Pakistan Bureau of Statistics

(Thousand US Dollars)

Country / Territory	FY19	FY20	2020				2021		
			Feb	Mar	Nov	Dec	Jan	Feb	Mar
<b>Grand Total</b>	<b>54,762,983</b>	<b>44,552,898</b>	<b>4,167,521</b>	<b>3,307,560</b>	<b>4,292,089</b>	<b>4,986,443</b>	<b>4,803,108</b>	<b>4,601,068</b>	<b>5,630,985</b>
<b>A. Latin America</b>	<b>11,131</b>	<b>11,351</b>	<b>1,104</b>	<b>722</b>	<b>971</b>	<b>1,150</b>	<b>1,057</b>	<b>592</b>	<b>1,262</b>
<b>B. Central America</b>	<b>122,216</b>	<b>152,546</b>	<b>24,113</b>	<b>11,443</b>	<b>10,388</b>	<b>5,308</b>	<b>10,448</b>	<b>8,169</b>	<b>16,503</b>
Mexico	102,353	103,283	7,733	9,442	9,282	4,423	9,210	6,343	14,300
Others	19,863	49,264	16,380	2,001	1,106	885	1,238	1,825	2,204
<b>C. South America</b>	<b>623,249</b>	<b>881,008</b>	<b>90,453</b>	<b>73,373</b>	<b>37,311</b>	<b>64,327</b>	<b>88,474</b>	<b>81,422</b>	<b>110,351</b>
Argentina	119,515	85,207	12,011	4,329	5,032	3,891	8,868	14,100	22,238
Brazil	456,683	754,463	72,789	64,465	29,650	55,796	76,632	63,931	85,354
Uruguay	2,027	3,622	256	582	73	109	162	76	646
Others	45,024	37,715	5,397	3,998	2,556	4,531	2,812	3,314	2,113
<b>D. North America</b>	<b>3,261,821</b>	<b>3,041,247</b>	<b>310,508</b>	<b>250,947</b>	<b>319,872</b>	<b>324,492</b>	<b>357,225</b>	<b>350,650</b>	<b>441,335</b>
Canada	493,096	500,658	22,598	14,051	45,355	82,757	58,081	68,987	48,399
USA	2,702,685	2,516,902	287,911	236,896	274,517	241,734	299,144	281,663	392,936
Others	66,040	23,687	-	-	-	..	-	-	-
<b>E. Eastern Europe</b>	<b>673,185</b>	<b>579,620</b>	<b>70,280</b>	<b>71,040</b>	<b>208,348</b>	<b>271,267</b>	<b>139,731</b>	<b>168,691</b>	<b>87,778</b>
Hungary	30,935	22,099	1,482	1,903	2,252	2,393	3,289	1,777	2,692
Romania	49,407	21,344	1,885	1,559	1,695	1,464	1,786	1,156	1,820
Russian Federation	284,284	291,642	35,711	47,348	93,557	195,459	85,193	58,697	63,387
Ukraine	95,391	70,303	9,839	8,796	97,400	34,849	28,510	46,160	2,663
Others	213,168	174,232	21,363	11,433	13,444	37,102	20,951	60,900	17,217
<b>F. Northern Europe</b>	<b>1,446,750</b>	<b>1,124,466</b>	<b>94,341</b>	<b>74,697</b>	<b>79,298</b>	<b>114,079</b>	<b>101,617</b>	<b>95,320</b>	<b>104,288</b>
Denmark	92,630	130,886	17,515	5,363	4,521	10,505	7,594	7,224	8,802
Finland	177,141	53,848	4,316	2,980	3,289	5,669	3,821	3,621	5,224
Norway	23,973	22,222	1,591	1,096	2,633	3,709	2,947	2,188	3,424
Sweden	233,591	193,722	13,844	14,088	16,332	22,998	24,943	19,152	18,008
United Kingdom	813,514	613,524	51,228	41,371	46,278	64,000	52,266	55,065	60,979
Others	105,902	110,263	5,846	9,799	6,246	7,198	10,046	8,070	7,851
<b>G. Southern Europe</b>	<b>1,204,435</b>	<b>734,251</b>	<b>56,081</b>	<b>48,798</b>	<b>67,300</b>	<b>75,779</b>	<b>60,745</b>	<b>71,222</b>	<b>80,539</b>
Greece	19,973	32,532	3,673	707	3,141	4,567	3,878	7,262	1,763
Italy	943,285	490,401	36,044	30,427	46,309	42,244	36,149	40,000	46,202
Spain	205,278	161,608	12,793	16,268	13,972	22,857	14,898	13,539	23,157
Others	35,900	49,710	3,571	1,395	3,879	6,111	5,819	10,420	9,418
<b>H. Western Europe</b>	<b>3,654,324</b>	<b>2,945,563</b>	<b>285,108</b>	<b>199,113</b>	<b>249,612</b>	<b>317,663</b>	<b>331,745</b>	<b>292,764</b>	<b>246,927</b>
Belgium	383,387	266,923	26,957	20,408	22,371	36,687	24,861	27,726	26,853
France	444,019	398,461	46,275	29,397	28,449	28,437	68,415	32,153	35,826
Germany	1,052,645	787,302	65,460	70,781	92,639	115,761	105,042	79,332	78,874
Netherlands	581,858	616,369	53,431	16,310	28,435	33,492	42,810	59,999	27,005
Switzerland	347,274	269,467	32,629	25,668	26,142	25,226	15,305	25,270	24,310
Others	845,142	607,040	60,356	36,549	51,576	78,060	75,312	68,283	54,060
<b>I. Eastern Africa</b>	<b>675,030</b>	<b>654,659</b>	<b>79,282</b>	<b>76,434</b>	<b>57,800</b>	<b>76,364</b>	<b>66,867</b>	<b>65,424</b>	<b>67,589</b>
Kenya	469,563	446,592	41,564	46,235	37,002	45,009	42,455	37,721	48,272
Mauritius	8,257	5,223	178	50	90	3,728	47	7	39
United Republic of Tanzania	38,382	95,849	24,305	18,337	4,645	14,026	8,846	9,674	5,102
Others	158,828	106,996	13,235	11,813	16,063	13,601	15,519	18,022	14,175

## 4.19 Imports by Selected Countries/Territories

(b) Pakistan Bureau of Statistics

(Thousand US Dollars)

Country / Territory	FY19	FY20	2020				2021		
			Feb	Mar	Nov	Dec	Jan	Feb	Mar
<b>J. Middle Africa</b>	<b>95,509</b>	<b>9,591</b>	<b>479</b>	<b>372</b>	<b>996</b>	<b>630</b>	<b>2,867</b>	<b>2,077</b>	<b>28,332</b>
<b>K. Northern Africa</b>	<b>623,595</b>	<b>802,362</b>	<b>51,440</b>	<b>17,886</b>	<b>51,877</b>	<b>122,833</b>	<b>27,782</b>	<b>41,518</b>	<b>96,984</b>
Egypt	151,655	286,436	38,811	6,954	32,834	61,298	7,788	8,308	46,305
Morocco	416,617	349,122	8,850	7,169	17,354	50,138	17,015	26,021	47,293
Others	55,323	166,805	3,779	3,763	1,690	11,397	2,979	7,188	3,386
<b>L. Southern Africa</b>	<b>1,201,756</b>	<b>1,010,189</b>	<b>86,135</b>	<b>88,691</b>	<b>92,521</b>	<b>110,807</b>	<b>108,673</b>	<b>97,019</b>	<b>167,573</b>
South Africa	1,185,283	997,414	85,019	88,221	92,277	109,525	107,526	96,254	166,388
Others	16,473	12,774	1,116	470	244	1,282	1,147	764	1,185
<b>M. Western Africa</b>	<b>392,652</b>	<b>304,296</b>	<b>28,586</b>	<b>29,447</b>	<b>6,197</b>	<b>13,041</b>	<b>39,921</b>	<b>25,289</b>	<b>21,687</b>
<b>N. Eastern Asia</b>	<b>16,173,383</b>	<b>14,730,384</b>	<b>1,206,229</b>	<b>1,027,482</b>	<b>1,472,740</b>	<b>1,709,783</b>	<b>1,655,617</b>	<b>1,591,895</b>	<b>2,026,992</b>
China	12,763,610	12,082,132	991,104	770,418	1,136,473	1,296,272	1,326,927	1,286,232	1,627,962
Hong Kong	116,593	145,186	7,321	5,198	10,251	17,093	10,445	5,451	7,611
Japan	1,825,071	1,105,126	85,919	101,714	142,292	135,206	136,708	136,745	192,824
Republic of Korea	827,784	788,211	61,506	87,178	119,133	173,198	117,696	111,571	143,410
Others	640,326	609,729	60,378	62,973	64,591	88,014	63,841	51,896	55,185
<b>O. South-Central Asia</b>	<b>2,617,751</b>	<b>1,408,754</b>	<b>113,606</b>	<b>58,595</b>	<b>174,659</b>	<b>165,836</b>	<b>150,597</b>	<b>119,112</b>	<b>125,452</b>
Afghanistan	549,216	473,144	45,998	20,519	77,014	66,748	54,591	15,472	21,701
Bangladesh	54,148	45,930	6,548	5,312	7,834	9,258	7,115	8,049	10,371
India	1,508,928	380,096	17,204	19,292	31,566	21,980	30,468	43,798	25,316
Iran	411,284	438,255	36,411	6,006	43,730	55,587	47,787	40,311	55,231
Sri Lanka	77,173	59,720	6,807	5,300	12,444	9,185	6,599	6,920	7,509
Others	17,001	11,609	639	2,166	2,070	3,078	4,038	4,562	5,325
<b>P. South Eastern Asia</b>	<b>6,034,637</b>	<b>5,039,922</b>	<b>539,778</b>	<b>463,594</b>	<b>536,941</b>	<b>608,054</b>	<b>583,861</b>	<b>536,968</b>	<b>734,109</b>
Indonesia	2,411,687	2,151,308	187,204	210,132	233,820	295,208	329,177	258,375	355,874
Malaysia	1,069,430	942,101	97,057	102,595	101,793	100,071	77,135	68,819	91,218
Singapore	757,159	633,143	139,665	31,919	43,839	48,208	25,604	46,282	40,701
Thailand	1,326,775	845,209	68,270	68,883	103,355	107,243	105,127	108,120	179,258
Others	469,585	468,161	47,583	50,063	54,134	57,323	46,818	55,372	67,060
<b>Q. Western Asia</b>	<b>15,596,765</b>	<b>10,803,674</b>	<b>1,101,008</b>	<b>779,422</b>	<b>893,827</b>	<b>957,609</b>	<b>1,028,215</b>	<b>999,774</b>	<b>1,217,034</b>
Bahrain	46,293	47,777	4,242	4,983	3,060	3,406	3,343	4,118	11,848
Jordan	28,108	15,375	789	434	1,328	1,962	1,965	1,895	1,724
Kuwait	1,365,027	1,131,334	130,258	60,920	107,455	107,638	127,556	141,187	175,362
Saudi Arabia	2,952,296	1,743,527	177,240	117,391	207,878	244,308	217,658	200,893	257,844
Turkey	379,222	356,607	27,802	22,604	57,861	61,046	38,368	35,855	32,425
United Arab Emirates	7,538,109	5,169,595	537,540	335,327	335,337	348,451	427,953	373,478	553,534
Others	3,287,711	2,339,458	223,136	237,763	180,907	190,797	211,372	242,348	184,297
<b>R. Australia &amp; New Zealand</b>	<b>353,834</b>	<b>303,861</b>	<b>28,976</b>	<b>20,948</b>	<b>31,412</b>	<b>47,360</b>	<b>47,665</b>	<b>53,139</b>	<b>56,114</b>
Australia	306,646	263,854	20,986	18,899	27,264	43,395	44,540	47,944	49,318
New Zealand	46,851	39,886	7,955	2,039	4,137	3,934	3,074	5,194	6,793
Others	337	121	36	11	11	31	51	1	3
<b>S. Others</b>	<b>970</b>	<b>15,153</b>	<b>16</b>	<b>14,556</b>	<b>25</b>	<b>63</b>	<b>4</b>	<b>25</b>	<b>137</b>



## 4.20 Terms of Trade and Indices of Unit Value of Exports by Commodity Groups (1990-91= 100)

PERIOD	Terms of Trade	All Groups	Food and live Animals	Beverages and Tobacco	Crude Materials Inedible Except Fuels	Mineral Fuels and Lubricants	Chemicals	Manufactured Goods	Machinery and Transport Equipments	Misc. Manufactured Articles
FY17	<b>58.64</b>	<b>703.39</b>	912.62	1,240.70	894.27	1,136.42	1,029.70	595.74	1,740.35	799.30
FY18	<b>58.31</b>	<b>735.50</b>	1,134.29	1,061.25	1,043.30	1,485.92	1,054.28	580.96	1,838.42	820.87
FY19	<b>59.21</b>	<b>794.77</b>	1,229.51	860.48	1,119.52	2,016.59	1,129.18	616.90	1,466.32	887.27
FY20	<b>61.43</b>	<b>841.44</b>	1,280.54	830.28	1,327.78	1,894.55	1,252.79	647.03	1,129.99	982.56
FY19										
Jul-Sep	<b>57.67</b>	<b>755.16</b>	1,153.35	959.54	1,109.62	2,063.32	1,110.95	586.37	1,461.01	830.31
Oct-Dec	<b>59.63</b>	<b>795.77</b>	1,257.44	848.99	1,024.09	2,082.45	1,146.10	620.96	1,381.52	873.19
Jan-Mar	<b>60.82</b>	<b>807.94</b>	1,242.14	819.37	1,167.73	1,842.06	1,095.42	629.44	1,456.97	915.65
Apr-Jun	<b>58.72</b>	<b>820.19</b>	1,265.12	814.02	1,176.63	2,078.54	1,164.26	630.83	1,565.78	929.93
FY20										
Jul-Sep	<b>60.55</b>	<b>830.09</b>	1,290.83	826.50	1,254.22	2,083.03	1,248.71	637.63	1,473.59	917.28
Oct-Dec	<b>61.66</b>	<b>855.28</b>	1,308.96	850.91	1,351.83	2,080.91	1,361.55	649.42	780.48	1,005.87
Jan-Mar	<b>62.10</b>	<b>849.77</b>	1,281.48	831.50	1,341.94	2,005.66	1,096.27	663.40	1,213.88	968.32
Apr-Jun	<b>61.42</b>	<b>830.61</b>	1,240.90	812.22	1,363.11	1,408.59	1,304.64	637.66	1,052.02	1,038.75
FY21										
Jul-Sep	<b>64.34</b>	<b>886.91</b>	1,306.56	865.55	1,328.39	1,503.23	1,442.83	665.48	1,429.66	1,148.70
Oct-Dec	<b>65.05</b>	<b>914.85</b>	1,381.79	859.36	1,250.31	1,565.81	1,490.11	672.73	1,337.17	1,214.59
Jan-Mar	<b>61.77</b>	<b>908.87</b>	1,379.42	628.77	1,125.23	1,600.29	1,040.51	673.45	1,414.88	1,210.42

Source: Pakistan Bureau of Statistics

## 4.21 Indices of Unit Value of Imports by Commodity Groups (1990-91= 100)

PERIOD	All Groups	Food and live Animals	Beverages and Tobacco	Crude Materials inedible except Fuels	Mineral Fuels and Lubricants	Veg./ Animal Oils and Fats	Chemicals	Manufactured Goods	Machinery and Transport Equipments	Misc. Manufactured Articles
FY17	<b>1,199.54</b>	839.73	1,757.42	1,027.69	811.76	1,086.72	1,264.82	924.51	1,878.69	2,445.41
FY18	<b>1,261.25</b>	943.23	1,656.22	1,020.56	1,030.32	1,010.73	1,264.05	939.97	1,913.85	2,652.61
FY19	<b>1,342.30</b>	908.93	1,325.61	1,102.13	1,564.46	995.35	1,335.10	1,110.15	1,533.64	2,186.14
FY20	<b>1,369.71</b>	1,172.18	1,287.99	1,228.58	1,411.00	1,133.53	1,455.62	1,289.64	1,387.32	2,019.53
FY19										
Jul-Sep	<b>1,309.39</b>	826.75	1,643.09	1,087.66	1,487.85	1,032.99	1,272.16	1,011.90	1,570.33	2,054.76
Oct-Dec	<b>1,334.50</b>	845.71	860.74	1,088.60	1,594.79	1,029.84	1,333.91	1,110.55	1,408.58	2,088.00
Jan-Mar	<b>1,328.50</b>	920.98	1,378.04	1,087.30	1,541.60	908.17	1,356.71	1,136.77	1,418.63	2,293.25
Apr-Jun	<b>1,396.81</b>	1,042.27	1,420.56	1,144.96	1,633.60	1,010.39	1,377.62	1,181.39	1,737.02	2,308.56
FY20										
Jul-Sep	<b>1,370.92</b>	1,097.89	1,341.74	1,177.12	1,581.48	1,068.85	1,388.11	1,267.68	1,283.96	2,147.72
Oct-Dec	<b>1,387.10</b>	1,166.43	1,361.24	1,268.66	1,537.85	1,088.87	1,426.77	1,305.80	1,342.22	2,024.27
Jan-Mar	<b>1,368.44</b>	1,205.84	1,234.33	1,136.54	1,616.92	1,106.95	1,496.57	1,324.46	1,115.70	1,760.77
Apr-Jun	<b>1,352.37</b>	1,218.55	1,214.63	1,332.00	907.75	1,269.46	1,511.03	1,260.63	1,807.38	2,145.34
FY21										
Jul-Sep	<b>1,378.39</b>	1,188.98	1,671.42	1,223.38	1,101.44	1,271.66	1,468.84	1,318.80	1,798.97	2,161.23
Oct-Dec	<b>1,406.44</b>	1,203.80	1,527.15	1,255.55	1,111.16	1,413.34	1,426.17	1,341.00	1,926.42	1,951.15
Jan-Mar	<b>1,471.46</b>	1,232.86	1,390.05	1,312.83	1,317.20	1,546.53	1,383.16	1,345.74	1,917.62	1,953.05

Source: Pakistan Bureau of Statistics

## 4.22 Quantum Index Number of Exports by Commodity Groups (1990-91= 100)

PERIOD	All Groups	Food and live Animals	Beverages and Tobacco	Crude Materials Inedible except Fuels	Mineral Fuels and Lubricants	Chemicals	Manu- factured Goods	Machinery and Transport Equipments	Misc. Manufactured Articles
FY17	<b>205.99</b>	250.96	153.01	214.11	51.33	477.37	186.39	3,911.82	236.30
FY18	<b>220.55</b>	265.35	365.63	232.05	80.27	404.57	198.35	2,394.26	258.08
FY19	<b>248.38</b>	265.65	439.61	239.38	100.90	586.22	205.60	2,636.51	349.13
FY20	<b>233.82</b>	288.41	460.39	196.74	96.93	690.96	193.17	2,920.74	316.19
FY19									
Jul-Sep	<b>219.21</b>	187.88	49.61	165.34	106.39	442.32	203.44	3,719.04	282.43
Oct-Dec	<b>247.15</b>	265.90	1,220.69	256.43	93.03	771.10	207.38	777.27	334.28
Jan-Mar	<b>260.91</b>	323.55	73.18	233.70	91.25	598.68	210.11	1,454.36	363.55
Apr-Jun	<b>266.25</b>	285.28	414.94	302.04	112.92	532.79	201.46	4,595.35	416.24
FY20									
Jul-Sep	<b>264.47</b>	261.50	176.41	220.29	72.83	550.75	226.17	663.60	373.49
Oct-Dec	<b>261.60</b>	302.39	365.81	224.07	119.04	607.84	217.92	805.29	363.49
Jan-Mar	<b>246.46</b>	298.90	824.02	173.59	79.63	853.26	198.85	5,633.73	351.03
Apr-Jun	<b>162.73</b>	290.85	475.30	168.99	116.23	752.00	129.73	4,580.32	176.73
FY21									
Jul-Sep	<b>213.51</b>	214.98	433.04	196.64	85.86	865.27	190.77	1,262.93	269.77
Oct-Dec	<b>253.50</b>	290.68	1,049.16	233.93	69.21	804.88	222.03	3,464.29	319.66
Jan-Mar	<b>271.76</b>	301.19	434.09	256.34	34.93	1,322.31	246.31	9,494.53	320.65

Source: Pakistan Bureau of Statistics

## 4.23 Quantum Index Number of Imports by Commodity Groups (1990-91=100)

PERIOD	All Groups	Food And live Animals	Beverages and Tobacco	Crude Materials Inedible except Fuels	Mineral Fuels and Lubricants	Veg./ Animal Oils and Fats	Chemicals	Manu- factured Goods	Machinery And Transport Equipments	Misc. Manufactured Articles
FY17	<b>372.09</b>	270.02	331.01	674.28	216.36	208.63	287.86	369.12	655.19	389.38
FY18	<b>415.76</b>	213.34	326.87	828.29	212.55	233.56	333.01	374.78	821.58	553.03
FY19	<b>381.96</b>	260.63	513.65	796.42	173.12	236.21	358.27	319.70	708.22	444.93
FY20	<b>308.99</b>	348.02	542.41	836.24	147.27	244.27	332.64	254.08	400.60	284.61
FY19										
Jul-Sep	<b>369.94</b>	252.15	385.19	530.15	172.48	236.82	356.87	312.57	738.08	395.82
Oct-Dec	<b>400.29</b>	251.91	718.44	596.10	185.18	231.46	386.79	298.05	844.33	462.74
Jan-Mar	<b>373.20</b>	224.36	600.79	951.20	154.29	238.26	327.49	346.13	682.37	376.94
Apr-Jun	<b>384.39</b>	314.10	350.16	1,108.22	180.51	238.31	361.93	322.03	568.11	544.21
FY20										
Jul-Sep	<b>298.28</b>	325.20	354.04	525.04	146.76	237.52	311.68	243.18	472.30	290.70
Oct-Dec	<b>332.85</b>	381.03	1,102.86	595.96	179.14	243.41	391.20	279.35	466.14	246.32
Jan-Mar	<b>313.75</b>	264.76	278.03	1,373.32	123.78	283.92	311.21	265.10	338.82	304.86
Apr-Jun	<b>291.06</b>	421.07	434.70	850.65	139.38	212.24	316.47	228.69	325.14	296.55
FY21										
Jul-Sep	<b>359.81</b>	318.23	93.60	882.13	191.17	312.29	418.28	290.79	465.08	271.61
Oct-Dec	<b>382.84</b>	473.36	173.23	1,136.60	170.98	203.96	456.37	347.57	452.45	393.05
Jan-Mar	<b>482.54</b>	266.28	871.18	1,366.64	163.69	447.05	442.77	312.20	914.51	465.13

Source: Pakistan Bureau of Statistics